



Product Release Announcement

Product Category	CADTranslate
Product Group	NX and Catia ICEM SURF
Product Release Version	28.0

Document Type	Product Release Announcement
Document Status	Released
Document Revision	1.0
Document Author	Bruce Pittman
Document Issued	04/08/2025

📍 THEOREM HOUSE
MARSTON PARK
BONEHILL RD
TAMWORTH
B78 3HU
UNITED KINGDOM

☎ +44(0)1827 305 350

📍 THEOREM SOLUTIONS INC.
100 WEST BIG BEAVER
TROY
MICHIGAN
48084
USA

☎ +(513) 576 1100

Table of Contents

History	3
Product Codes.....	4
Supported Application Revisions.....	5
Supported Operating Systems.....	5
Supporting API's.....	6
Library Revision.....	6
Installation Process Considerations	6
Distribution Media	6
New Features / Enhancements	7
NX_ICEMSurf.....	7
Known Limitations and Restrictions.....	8
NX_ICEMSurf.....	8
NX_ICEMSurf.....	8
General.....	8
Resolved Support Calls.....	9

History

Revision	Update Information
1.0	Initial document release for Version 28.0

Product Codes

Product Code	Product Description
NXSDB-B1	NX To CATIA ICEM Surf Bi-Directional

Supported Application Revisions

The following application revisions have been qualified with this release.

Application	Revision
Siemens NX	NX 2312, 2406 & 2412
ICEM Surf	Up to 2025

Supported Operating Systems

The following operating systems have been qualified with this release

Operating System	Qualification Status
Windows 10	Qualified and fully supported
Windows 11	Qualified and fully supported

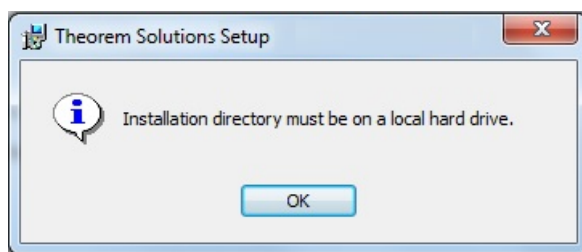
Supporting API's

The following supporting API support is used

Library	Revision
Surf DB	4.12 (2025)

Installation Process Considerations

Starting with version 20.0 of Theorem Solutions applications changes have been made to the installation process. These changes have transitioned from a JAVA based installer package to a standard Microsoft Installer (.msi) package. A current limitation of the Microsoft msi method is that the software cannot be installed directly on to either externally mapped or network drives when installed from a client machine:



Therefore, the installation must be performed to a drive that is local to the machine itself. If you are attempting to install the software onto a network drive, then please refer to the configuration guide available from the following link:

http://www.theorem.com/documentation/Documentation/Client_Configuration.pdf.

Distribution Media

CD images of the latest release are available from the following download site. The installation media for the bi-directional product is also the same media when installing a uni-directional variant.

Product Codes	Select link to download CD images
All Product Codes for all supported versions of CATIA V5	CAD_28.0_NXSDB_WIN.01.msi
Theorem User Interface	CAD_28.0_UI_WIN.01.msi
Theorem License Manager	CAD_FLEXLM_11.19_WIN.01.msi

New Features / Enhancements

The following new features or enhancements have been introduced with this release.

NX_ICEMSurf

Ref ID	New Feature / Enhancement Description
1	Added support for NX 2312, 2406 & 2412
2	
3	
4	

Known Limitations and Restrictions

The following limitations and restrictions have been identified prior to release.

NX_ICEMSurf

Ref ID	Limitations and Restrictions
1	nist_ctc_02_asme1_nx800_rc will not translate properly.

NX_ICEMSurf

Ref ID	Limitations and Restrictions

General

Ref ID	Limitations and Restrictions

Resolved Support Calls

The following list of Support Calls are resolved with this release.

Support Call ID	Brief Description
-----------------	-------------------



UK, Europe and Asia Pacific Regions



THEOREM HOUSE
MARSTON PARK
BONEHILL RD
TAMWORTH
B78 3HU
UNITED KINGDOM



sales.theorem@techsoft3d.com



+44 (0) 1827 305 350

USA and the America



THEOREM SOLUTIONS INC
100 WEST BIG BEAVER
TROY
MICHIGAN
48084
USA



sales-usa.theorem@techsoft3d.com



+(513) 576 1100



THEOREM.COM