



PRODUCT RELEASE ANNOUNCEMENT

Product Category	TRANSLATE
Product Group	CATIA V5 Multi-CAD <> JT
Release Version	25.1

Document Type	Product Release Announcement
Status	Released
Revision	1.0
Author	Product Manager
Issued	25/07/2022



Contents

Document History.....	2
Product Codes	3
Supported Application Revisions.....	4
Supported Operating Systems.....	4
Installation Process Considerations.....	5
Distribution Media.....	5
CATIA V5 Media Installation Sequence	6
New Features / Enhancements	7
Multi-CAD CATIA V5 <> JT (MC5JT)	7
Known Limitations and Restrictions.....	8
Multi-CAD CATIA V5 <> JT (MC5JT/JTMC5)	8
Resolved Support Calls	9



Document History

Revision	Update Information
1.0	Initial Release.

Product Codes

Product Code	Product Description
MC5JT-B1	CATIA V5 Multi-CAD <> JT Bi-direction CADverter
MC5JT-U1	CATIA V5 Multi-CAD > JT Uni-direction CADverter
MC5JT-A1	CATIA V5 Multi-CAD <> JT PMI Add-on Module for use with MC5JTB1
MC5JT-A2	CATIA V5 Multi-CAD > JT PMI Add-on Module for use with MC5JTU1
JTMC5-U1	JT > CATIA V5 Multi-CAD Uni-direction CADverter
JTMC5-A1	JT > CATIA V5 Multi-CAD PMI Add-on Module for use with JTMC5-U1



Supported Application Revisions

The following application revisions have been qualified with this release

Application	Revision
JTOpen	JTK 11.0
CATIA V5	CATIA V5-6R2019 CATIA V5-6R2020 CATIA V5-6R2021 CATIA V5-6R2022

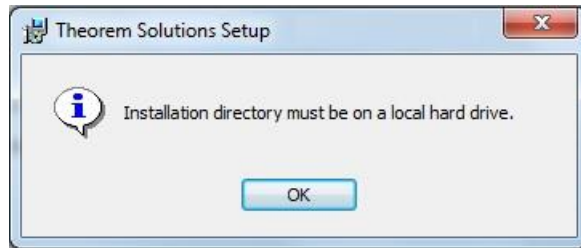
Supported Operating Systems

The following operating systems have been qualified with this release

Operating System	Qualification Status
Windows 10	Qualified and fully supported for CATIA V5-6R2019 CATIA V5-6R2020 CATIA V5-6R2021 CATIA V5-6R2022

Installation Process Considerations

Starting with version 20.0 of Theorem Solutions applications changes have been made to the installation process. These changes have transitioned from a JAVA based installer package to a standard Microsoft Installer (.msi) package. A current limitation of the Microsoft msi method is that the software cannot be installed directly on to either externally mapped or network drives when installed from a client machine:



Therefore, the installation must be performed to a drive that is local to the machine itself.

If you are attempting to install the software onto a network drive, then please refer to the configuration guide available from the following link
http://www.theorem.com/documentation/Documentation/Client_Configuration.pdf

Distribution Media

CD images of the latest release are available from the following download site. The installation media for the bi-directional product is also the same media when installing a uni-directional variant.

Product Code	URL for CD image download
All Product Codes for all supported versions of CATIA V5	CAD_25.1_MC5JT_WIN.01.msi
Theorem User Interface	CAD_25.1_UI_WIN.01.msi
Theorem License Manager	CAD_FLEXLM_11.17_WIN.01.msi

Note, the necessary software required for any of the specific add-on modules will be automatically installed with any of the base level installations. Therefore, it is not necessary to change the installation even if an additional add-on module license is purchased at a later date to the original installation.



In addition to the translator application itself there is also a mandatory requirement to install the prerequisite Theorem TXX Multi-CAD platform media into the CATIA V5 installation as part of the installation procedure. The TXX Multi-CAD platform media is related to each of the specific releases of CATIA V5 that is being used.

Prerequisite TXX Installation	URL for CD image download
CATIA V5-6R2019	https://s3-eu-west-1.amazonaws.com/theorem.software/CADverter_TXX_Media/V5-6R2019.THEOREM.win_b64.zip
CATIA V5-6R2020	https://s3-eu-west-1.amazonaws.com/theorem.software/CADverter_TXX_Media/V5-6R2020.THEOREM.win_b64.1-1.zip
CATIA V5-6R2021	https://s3-eu-west-1.amazonaws.com/theorem.software/CADverter_TXX_Media/V5-6R2021.THEOREM.win_b64.zip
CATIA V5-6R2022	https://s3-eu-west-1.amazonaws.com/theorem.software/CADverter_TXX_Media/V5-6R2022.THEOREM.win_b64.1-1.zip

CATIA V5 Media Installation Sequence

The installation of a CATIA V5 Multi-CAD based product must follow a specific installation sequence to ensure that the combination of base products and software updates provided by both Theorem Solutions and Dassault Systems are configured correctly. This includes the base level CATIA V5 installation, the Theorem TXX Multi-CAD platform, the CATIA V5 Service Pack and Hotfix level. Unless the installation sequence is strictly followed there is a potential risk that the CATIA V5 installation will not be configured correctly.

Therefore, the following CATIA application installation sequence MUST be strictly followed to ensure that the correct configuration and updates are available. Note, the installation of the Theorem Multi-CAD translator can be undertaken at any point during this sequence.

1. Install the base GA release of the required version of CATIA V5-6
2. Install the Theorem TXX platform media associated with the required version of CATIA V5-6
3. Install the required CATIA V5-6 Service Pack release
4. Install the required CATIA V5-6 Hotfix release
5. Install the Theorem Multi-CAD product



New Features / Enhancements

The following new features or enhancements have been introduced with this release

Multi-CAD CATIA V5 <> JT (MC5JT)

Ref ID	New Feature / Enhancement Description
1	CATIA V5: Added support for CATIA V5-6R2022 (R32)
2	JT: Support for JT 11.0
3	Daimler compliant JT data
4	General bug fixes and improvements

Known Limitations and Restrictions

The following limitations and restrictions have been identified during final testing prior to release

Multi-CAD CATIA V5 <> JT (MC5JT/JTMC5)

Ref Limitations and Restrictions

ID

1	Help.html not available in installation location. Please go directly to https://theorem.com/documentation
2	When using File > Save As there is no confirmation message presented to the user when the Save is complete.
3	If the Environment Variable set FLEXLM_DIAGNOSTICS=3 is enabled the process will fail to create a JT file

Resolved Support Calls

The following list of Support Calls are resolved with this release

No support calls raised and closed since previous version 24.1

Support Call ID	Brief Description

