



PRODUCT RELEASE ANNOUNCEMENT

Product Category	TRANSLATE
Product Group	CATIA V5 Multi-CAD <> JT
Release Version	23.1

Document Type	Product Release Announcement
Status	Released
Revision	1.0
Author	Product Manager
Issued	05/06/2020



Contents

Document History.....	2
Product Codes	3
Supported Application Revisions.....	4
Supported Operating Systems.....	4
Installation Process Considerations.....	5
Distribution Media.....	5
CATIA V5 Media Installation Sequence	6
New Features / Enhancements	7
Multi-CAD CATIA V5 to JT (MC5JT)	7
JT to Multi-CAD CATIA V5 (JTMC5)	7
Known Limitations and Restrictions.....	8
Multi-CAD CATIA V5 to/from JT (MC5JT/JTMC5)	8
Resolved Support Calls	9



Document History

Revision	Update Information
1.0	Initial Release.



Product Codes

Product Code	Product Description
MC5JT-B1	CATIA V5 Multi-CAD <> JT Bi-direction CADverter
MC5JT-U1	CATIA V5 Multi-CAD > JT Uni-direction CADverter
MC5JT-A1	CATIA V5 Multi-CAD <> JT PMI Add-on Module for use with MC5JTB1
MC5JT-A2	CATIA V5 Multi-CAD > JT PMI Add-on Module for use with MC5JTU1
JTMC5-U1	JT > CATIA V5 Multi-CAD Uni-direction CADverter
JTMC5-A1	JT > CATIA V5 Multi-CAD PMI Add-on Module for use with JTMC5-U1

Supported Application Revisions

The following application revisions have been qualified with this release

Application	Revision
JTOpen	JTK 10.5
CATIA V5	V5-6R2017, V5-6R2018, V5-6R2019, V5-6R2020

Supported Operating Systems

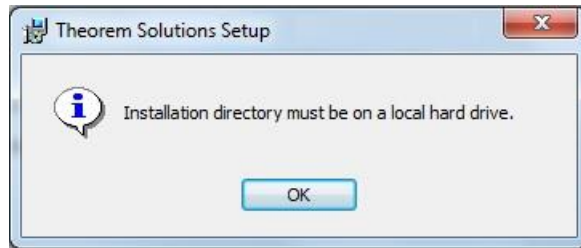
The following operating systems have been qualified with this release

Operating System	Qualification Status
Windows 10	Qualified and fully supported for all supported CATIA V5 releases
Windows Server 2016	Qualified and fully supported for CATIA V5-6R2017, CATIA V5-6R2018, CATIA V5-6R2019 & CATIA V5-6R2020



Installation Process Considerations

Starting with version 20.0 of Theorem Solutions applications changes have been made to the installation process. These changes have transitioned from a JAVA based installer package to a standard Microsoft Installer (.msi) package. A current limitation of the Microsoft msi method is that the software cannot be installed directly on to either externally mapped or network drives when installed from a client machine:



Therefore, the installation must be performed to a drive that is local to the machine itself.

If you are attempting to install the software onto a network drive, then please refer to the configuration guide available from the following link
http://www.theorem.com/documentation/Documentation/Client_Configuration.pdf

Distribution Media

CD images of the latest release are available from the following download site. The installation media for the bi-directional product is also the same media when installing a uni-directional variant.

Product Code	URL for CD image download
All Product Codes for all supported versions of CATIA V5	https://s3-eu-west-1.amazonaws.com/theorem.software/CADverter_23.1/CAD_23.1_MC5JT_WIN.01.msi
Theorem User Interface	https://s3-eu-west-1.amazonaws.com/theorem.software/CADverter_23.1/CAD_23.1_UI_WIN.02.msi
Theorem License Manager	https://s3-eu-west-1.amazonaws.com/theorem.software/LicenseManager/CAD_FLEXLM_11.14_WIN.01.msi

Note, the necessary software required for any of the specific add-on modules will be automatically installed with any of the base level installations. Therefore, it is not necessary to change the installation even if an additional add-on module license is purchased at a later date to the original installation.



In addition to the translator application itself there is also a mandatory requirement to install the prerequisite Theorem TXX Multi-CAD platform media into the CATIA V5 installation as part of the installation procedure. The TXX Multi-CAD platform media is related to each of the specific releases of CATIA V5 that is being used.

Prerequisite TXX Installation	URL for CD image download
CATIA V5-6R2017	https://s3-eu-west-1.amazonaws.com/theorem.software/CADverter_TXX_Media/V5-6R2017.THEOREM.win_b64.zip
CATIA V5-6R2018	https://s3-eu-west-1.amazonaws.com/theorem.software/CADverter_TXX_Media/V5-6R2018.THEOREM.win_b64.zip
CATIA V5-6R2019	https://s3-eu-west-1.amazonaws.com/theorem.software/CADverter_TXX_Media/V5-6R2019.THEOREM.win_b64.zip
CATIA V5-6R2020	https://s3-eu-west-1.amazonaws.com/theorem.software/CADverter_TXX_Media/V5-6R2020.THEOREM.win_b64.1-1.zip

CATIA V5 Media Installation Sequence

The installation of a CATIA V5 Multi-CAD based product must follow a specific installation sequence to ensure that the combination of base products and software updates provided by both Theorem Solutions and Dassault Systems are configured correctly. This includes the base level CATIA V5 installation, the Theorem TXX Multi-CAD platform, the CATIA V5 Service Pack and Hotfix level. Unless the installation sequence is strictly followed there is a potential risk that the CATIA V5 installation will not be configured correctly.

Therefore, the following CATIA application installation sequence MUST be strictly followed to ensure that the correct configuration and updates are available. Note, the installation of the Theorem Multi-CAD translator can be undertaken at any point during this sequence.

1. Install the base GA release of the required version of CATIA V5-6
2. Install the Theorem TXX platform media associated with the required version of CATIA V5-6
3. Install the required CATIA V5-6 Service Pack release
4. Install the required CATIA V5-6 Hotfix release



New Features / Enhancements

The following new features or enhancements have been introduced with this release

Multi-CAD CATIA V5 to JT (MC5JT)

Ref ID	New Feature / Enhancement Description
1	CATIA V5 Read: Added support for CATIA V5-6R2020 (R30)
2	CATIA V5 Read: Implement customised product names for export using env TS_JT_MCAD_OPTIONS_PRODUCT_NAMING=<filename>
3	CATIA V5 Read: Improve view visibility support for Construction Geometry.
4	CATIA V5 Read: Added support to export Annotation to Annotation associations.
5	JT Write: Support for PMI associated to wireframe geometry
6	JT Write: Improvements to memory use
7	Improved logging and general bug fixes

JT to Multi-CAD CATIA V5 (JTMCS)

Ref ID	New Feature / Enhancement Description
1	CATIA V5 Write: Added support for CATIA V5-6R2020 (R30)
2	CATIA V5 Write: Improvements for Capture and View association and view orientations for import JT to V5.
3	JT Read: Integrated with JT Open Libraries version 10.5
4	JT Read: Improvements to memory use



Known Limitations and Restrictions

The following limitations and restrictions have been identified during final testing prior to release

Multi-CAD CATIA V5 to/from JT (MC5JT/JTMC5)

Ref **Limitations and Restrictions**

ID

1	
---	--



Resolved Support Calls

The following list of Support Calls are resolved with this release

Support Call ID	Brief Description
CAS-04038-L3H3Q4	Colour on CATPart bodies incorrectly exported to JT by interactive SaveAs of CATPart.
CAS-04162-M2D6N7	Batch mode import failure
CAS-04218-V6P3X0	Colour processing error
CAS-04013-Y6J4S9	Excessive processing time when translating CGR data.