



---

## PRODUCT RELEASE ANNOUNCEMENT

---

Product Category	<b>Multi-CAD</b>
Product Group	CATIA V5 Multi-CAD <> JT
Release Version	22.1

Document Type	<b>Product Release Announcement</b>
Status	Released
Revision	2.0
Author	Product Manager
Issued	22/07/2019



## Contents

Document History.....	2
Product Codes .....	3
Supported Application Revisions.....	3
Supporting API's .....	3
Supported Operating Systems.....	4
Installation Process Considerations.....	5
Distribution Media.....	5
CATIA V5 Media Installation Sequence .....	6
Related Distribution Media .....	7
New Features / Enhancements .....	8
Multi-CAD CATIA V5 to JT (MC5JT) .....	8
JT to Multi-CAD CATIA V5 (JTM5) .....	8
Known Limitations and Restrictions.....	9
Multi-CAD CATIA V5 to/from JT (MC5JT/JTM5) .....	9
Resolved Support Calls .....	10



## Document History

Revision	Update Information
1.0	Initial Release.
2.0	Added comments for <b>expand_part body_names</b> when processing CGR files.

## Product Codes

Product Code	Product Description
<b>MC5JT-B1</b>	CATIA V5 Multi-CAD <> JT Bi-direction CADverter
<b>MC5JT-U1</b>	CATIA V5 Multi-CAD > JT Uni-direction CADverter
<b>MC5JT-A1</b>	CATIA V5 Multi-CAD <> JT PMI Add-on Module for use with MC5JTB1
<b>MC5JT-A2</b>	CATIA V5 Multi-CAD > JT PMI Add-on Module for use with MC5JTU1
<b>JTMC5-U1</b>	JT > CATIA V5 Multi-CAD Uni-direction CADverter
<b>JTMC5-A1</b>	JT > CATIA V5 Multi-CAD PMI Add-on Module for use with JTMC5-U1

## Supported Application Revisions

The following application revisions have been qualified with this release

Application	Revision
<b>Siemens JT</b>	JT file format from 6.1 to 10.0, default file format 9.5
<b>CATIA V5</b>	V5-6R2015, V5-6R2016, V5-6R2017, V5-6R2018, V5-6R2019

## Supporting API's

The following supporting API versions are used

Application	Revision
<b>JT Open</b>	JTK version 10.2.1.1
<b>CATIA V5 Multi-CAD (XCAD)</b>	V5-6R2015, V5-6R2016, V5-6R2017, V5-6R2018, V5-6R2019



## Supported Operating Systems

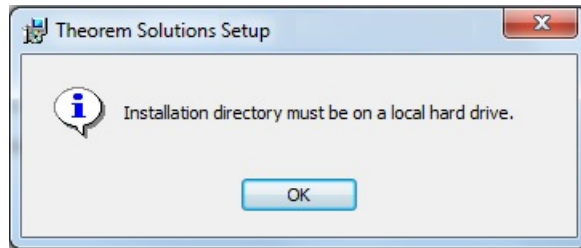
The following operating systems have been qualified with this release

<b>Operating System</b>	<b>Qualification Status</b>
<b>Windows 8.1 64bit</b>	Qualified and fully supported for all supported CATIA V5 releases
<b>Windows 10 64bit</b>	Qualified and fully supported for all supported CATIA V5 releases



## Installation Process Considerations

Starting with version 20.0 of Theorem Solutions applications changes have been made to the installation process. These changes have transitioned from a JAVA based installer package to a standard Microsoft Installer (.msi) package. A current limitation of the Microsoft msi method is that the software cannot be installed directly on to either externally mapped or network drives when installed from a client machine:



Therefore, the installation must be performed to a drive that is local to the machine itself.

If you are attempting to install the software onto a network drive, then please refer to the configuration guide available from the following link  
[http://www.theorem.com/documentation/Documentation/Client\\_Configuration.pdf](http://www.theorem.com/documentation/Documentation/Client_Configuration.pdf).

## Distribution Media

CD images of the latest release are available from the following download site. The installation media for the bi-directional product is also the same media when installing a uni-directional variant.

Product Code	URL for CD image download
<b>MC5JT-B1</b>	<a href="https://s3-eu-west-1.amazonaws.com/theorem.software/CADverter_22.1/CAD_22.1_MC5JT_WIN.01.msi">https://s3-eu-west-1.amazonaws.com/theorem.software/CADverter_22.1/CAD_22.1_MC5JT_WIN.01.msi</a>
<b>MC5JT-U1</b>	<a href="https://s3-eu-west-1.amazonaws.com/theorem.software/CADverter_22.1/CAD_22.1_MC5JT_WIN.01.msi">https://s3-eu-west-1.amazonaws.com/theorem.software/CADverter_22.1/CAD_22.1_MC5JT_WIN.01.msi</a>
<b>JTMC5-U1</b>	<a href="https://s3-eu-west-1.amazonaws.com/theorem.software/CADverter_22.1/CAD_22.1_MC5JT_WIN.01.msi">https://s3-eu-west-1.amazonaws.com/theorem.software/CADverter_22.1/CAD_22.1_MC5JT_WIN.01.msi</a>

Note, the necessary software required for any of the specific add-on modules will be automatically installed with any of the base level installations. Therefore, it is not necessary to change the installation even if an additional add-on module license is purchased at a later date to the original installation.

In addition to the translator application itself there is also a mandatory requirement to install the prerequisite Theorem TXX Multi-CAD platform media into the CATIA V5



installation as part of the installation procedure. The TXX Multi-CAD platform media is related to each of the specific releases of CATIA V5 that is being used.

Prerequisite TXX Installation	URL for CD image download
<b>CATIA V5-6R2015</b>	<a href="https://s3-eu-west-1.amazonaws.com/theorem.software/CADverter_TXX_Media/V5-6R2015.THEOREM.win_b64.zip">https://s3-eu-west-1.amazonaws.com/theorem.software/CADverter_TXX_Media/V5-6R2015.THEOREM.win_b64.zip</a>
<b>CATIA V5-6R2016</b>	<a href="https://s3-eu-west-1.amazonaws.com/theorem.software/CADverter_TXX_Media/V5-6R2016.THEOREM.win_b64.zip">https://s3-eu-west-1.amazonaws.com/theorem.software/CADverter_TXX_Media/V5-6R2016.THEOREM.win_b64.zip</a>
<b>CATIA V5-6R2017</b>	<a href="https://s3-eu-west-1.amazonaws.com/theorem.software/CADverter_TXX_Media/V5-6R2017.THEOREM.win_b64.zip">https://s3-eu-west-1.amazonaws.com/theorem.software/CADverter_TXX_Media/V5-6R2017.THEOREM.win_b64.zip</a>
<b>CATIA V5-6R2018</b>	<a href="https://s3-eu-west-1.amazonaws.com/theorem.software/CADverter_TXX_Media/V5-6R2018.THEOREM.win_b64.zip">https://s3-eu-west-1.amazonaws.com/theorem.software/CADverter_TXX_Media/V5-6R2018.THEOREM.win_b64.zip</a>
<b>CATIA V5-6R2019</b>	<a href="https://s3-eu-west-1.amazonaws.com/theorem.software/CADverter_TXX_Media/V5-6R2019.THEOREM.win_b64.zip">https://s3-eu-west-1.amazonaws.com/theorem.software/CADverter_TXX_Media/V5-6R2019.THEOREM.win_b64.zip</a>

## CATIA V5 Media Installation Sequence

The installation of a CATIA V5 Multi-CAD based product must follow a specific installation sequence to ensure that the combination of base products and software updates provided by both Theorem Solutions and Dassault Systems are configured correctly. This includes the base level CATIA V5 installation, the Theorem TXX Multi-CAD platform, the CATIA V5 Service Pack and Hotfix level. Unless the installation sequence is strictly followed there is a potential risk that the CATIA V5 installation will not be configured correctly.

Therefore, the following CATIA application installation sequence MUST be strictly followed to ensure that the correct configuration and updates are available;

1. Install the base GA release of the required version of CATIA V5-6
2. Install the Theorem TXX platform media associated with the required version of CATIA V5-6
3. Install the required CATIA V5-6 Service Pack release
4. Install the required CATIA V5-6 Hotfix release

Note, the installation of the Theorem Multi-CAD translator can be undertaken at any point during this sequence.



## Related Distribution Media

In addition to the translator software itself there are also two other related media distributions available. One is for the installation and configuration of the Theorem User Interface. This is designed as a free-standing user interface for the translator allowing the user to navigate the file system and initiate translations either interactively or in batch using standard drag and drop techniques. The second media distribution contains the Theorem License Manager which is installed on the nominated license server(s) and manages the user access to the purchased volume of concurrent Theorem application licenses.

Product Code	URL for CD image download
<b>Theorem User Interface</b>	<a href="https://s3-eu-west-1.amazonaws.com/theorem.software/CADverter_22.1/CAD_22.1_UI_WIN.01.msi">https://s3-eu-west-1.amazonaws.com/theorem.software/CADverter_22.1/CAD_22.1_UI_WIN.01.msi</a>
<b>Theorem License Manager</b>	<a href="https://s3-eu-west-1.amazonaws.com/theorem.software/LicenseManager/CAD_FLEXLM_11.14_WIN.01.msi">https://s3-eu-west-1.amazonaws.com/theorem.software/LicenseManager/CAD_FLEXLM_11.14_WIN.01.msi</a>





## New Features / Enhancements

The following new features or enhancements have been introduced with this release

### Multi-CAD CATIA V5 to JT (MC5JT)

Ref ID	New Feature / Enhancement Description
1	Support for CATIA V5-6R2019 has been implemented with this release
2	Improved CGR processing. This new feature <b>subnode body_names</b> enables a single CGR file that contains multiple parts to be viewed / accessed using the JT <b>Show leaf structure</b> option.
3	The JT assembly structure can now be defined using the STEP AP242 BOM representation with subordinate JT component files. Within the <b>tess.config</b> file you can edit the <b>StructureOutputType</b> as <b>JT</b> (default) or <b>STEPBOM</b>
4	With this version it's now possible to control the translation output when running in batch mode, when running the translator interactively within CATIA V5 the user can control the derived data to be either Multicad or Translation mode. When running from command line the default translation mode is Multicad, the user can override this default with the use of the command line <b>translator_mode_on</b> , to invoke the creation of Multicad output the user should either not specify an option or specify <b>translator_mode_off</b> .
5	When processing CGR files it is now possible to create separate JT "parts" for each of the bodies in the CGR file using the options <b>expand_part body_names</b> . The resultant JT output will allow access to each of the bodies in the original CGR file. The individual JT "parts" will automatically be allocated a sequence number appended to the CGR filename to differentiate each file.

### JT to Multi-CAD CATIA V5 (JTMCS)

Ref ID	New Feature / Enhancement Description
1	Support for CATIA V5-6R2019 has been implemented with this release



## Known Limitations and Restrictions

The following limitations and restrictions have been identified during final testing prior to release

Multi-CAD CATIA V5 to/from JT (MC5JT/JTMC5)

<b>Ref ID</b>	<b>Limitations and Restrictions</b>
---------------	-------------------------------------

<b>1</b>	
----------	--

## Resolved Support Calls

The following list of Support Calls are resolved with this release

<b>Support Call ID</b>	<b>Brief Description</b>
<b>CAS-03932-S2P2T0</b>	When processing 3DXML it is now possible to create a single LOD when using config file.
<b>CAS-03989-C5L1Z6</b>	Issue processing Layer Filter containing spaces has now been fixed.

