



---

## PRODUCT RELEASE ANNOUNCEMENT

---

|                  |                          |
|------------------|--------------------------|
| Product Category | <b>Multi-CAD</b>         |
| Product Group    | CATIA V5 Multi-CAD <> JT |
| Release Version  | 21.3                     |

|               |                                     |
|---------------|-------------------------------------|
| Document Type | <b>Product Release Announcement</b> |
| Status        | Released                            |
| Revision      | 1.0                                 |
| Author        | Trevor Leeson                       |
| Issued        | 26/09/2018                          |



## Contents

|  |    |
|--|----|
| Document History.....                            | 2  |
| Product Codes .....                              | 3  |
| Supported Application Revisions.....             | 3  |
| Supporting API's .....                           | 3  |
| Supported Operating Systems.....                 | 4  |
| Installation Process Considerations.....         | 5  |
| Distribution Media.....                          | 5  |
| CATIA V5 Media Installation Sequence .....       | 6  |
| Related Distribution Media .....                 | 7  |
| New Features / Enhancements .....                | 8  |
| Multi-CAD CATIA V5 to JT (MC5JT) .....           | 8  |
| JT to Multi-CAD CATIA V5 (JTM5) .....            | 8  |
| Known Limitations and Restrictions.....          | 10 |
| Multi-CAD CATIA V5 to/from JT (MC5JT/JTM5) ..... | 10 |
| Resolved Support Calls .....                     | 11 |



## Document History

| Revision | Update Information |
|----------|--------------------|
| 1.0      | Initial Release.   |
|          |                    |
|          |                    |
|          |                    |



## Product Codes

| Product Code    | Product Description   |
|-----------------|---|
| <b>MC5JT-B1</b> | CATIA V5 Multi-CAD <> JT Bi-direction CADverter                 |
| <b>MC5JT-U1</b> | CATIA V5 Multi-CAD > JT Uni-direction CADverter                 |
| <b>MC5JT-A1</b> | CATIA V5 Multi-CAD <> JT PMI Add-on Module for use with MC5JTB1 |
| <b>MC5JT-A2</b> | CATIA V5 Multi-CAD > JT PMI Add-on Module for use with MC5JTU1  |
| <b>JTMC5-U1</b> | JT > CATIA V5 Multi-CAD Uni-direction CADverter                 |
| <b>JTMC5-A1</b> | JT > CATIA V5 Multi-CAD PMI Add-on Module for use with JTMC5-U1 |

## Supported Application Revisions

The following application revisions have been qualified with this release

| Application       | Revision   |
|-------------------|--|
| <b>Siemens JT</b> | JT file format from 6.1 to 10.0, default file format 9.5 |
| <b>CATIA V5</b>   | V5-6R2015, V5-6R2016, V5-6R2017, V5-6R2018               |

## Supporting API's

The following supporting API versions are used

| Application                      | Revision                                   |
|----------------------------------|--|
| <b>JT Open</b>                   | JTK version 10.1.0.0                       |
| <b>CATIA V5 Multi-CAD (XCAD)</b> | V5-6R2015, V5-6R2016, V5-6R2017, V5-6R2018 |



## Supported Operating Systems

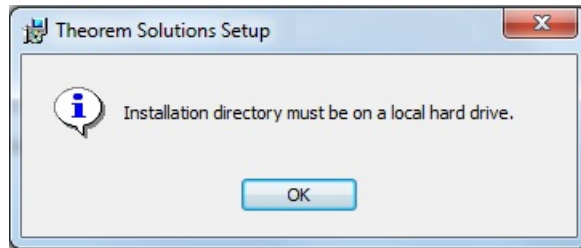
The following operating systems have been qualified with this release

| <b>Operating System</b>  | <b>Qualification Status</b>                                       |
|--------------------------|---|
| <b>Windows 7 64bit</b>   | Qualified and fully supported for all supported CATIA V5 releases |
| <b>Windows 8.1 64bit</b> | Qualified and fully supported for all supported CATIA V5 releases |
| <b>Windows 10 64bit</b>  | Qualified and fully supported for all supported CATIA V5 releases |



## Installation Process Considerations

Starting with version 20.0 of Theorem Solutions applications changes have been made to the installation process. These changes have transitioned from a JAVA based installer package to a standard Microsoft Installer (.msi) package. A current limitation of the Microsoft msi method is that the software cannot be installed directly on to either externally mapped or network drives when installed from a client machine:



Therefore, the installation must be performed to a drive that is local to the machine itself.

If you are attempting to install the software onto a network drive, then please refer to the configuration guide available from the following link  
[http://www.theorem.com/documentation/Documentation/Client\\_Configuration.pdf](http://www.theorem.com/documentation/Documentation/Client_Configuration.pdf).

## Distribution Media

CD images of the latest release are available from the following download site. The installation media for the bi-directional product is also the same media when installing a uni-directional variant.

| Product Code | URL for CD image download   |
|--------------|---|
| MC5JT-B1     | <a href="https://s3-eu-west-1.amazonaws.com/theorem.software/CADverter_21.3/CAD_21.3_MC5JT_WIN.01.msi">https://s3-eu-west-1.amazonaws.com/theorem.software/CADverter_21.3/CAD_21.3_MC5JT_WIN.01.msi</a> |
| MC5JT-U1     | <a href="https://s3-eu-west-1.amazonaws.com/theorem.software/CADverter_21.3/CAD_21.3_MC5JT_WIN.01.msi">https://s3-eu-west-1.amazonaws.com/theorem.software/CADverter_21.3/CAD_21.3_MC5JT_WIN.01.msi</a> |
| JTMC5-U1     | <a href="https://s3-eu-west-1.amazonaws.com/theorem.software/CADverter_21.3/CAD_21.3_MC5JT_WIN.01.msi">https://s3-eu-west-1.amazonaws.com/theorem.software/CADverter_21.3/CAD_21.3_MC5JT_WIN.01.msi</a> |

Note, the necessary software required for any of the specific add-on modules will be automatically installed with any of the base level installations. Therefore, it is not necessary to change the installation even if an additional add-on module license is purchased at a later date to the original installation.



In addition to the translator application itself there is also a mandatory requirement to install the prerequisite Theorem TXX Multi-CAD platform media into the CATIA V5 installation as part of the installation procedure. The TXX Multi-CAD platform media is related to each of the specific releases of CATIA V5 that is being used.

| Prerequisite TXX Installation | URL for CD image download   |
|-------------------------------|---|
| <b>CATIA V5-6R2015</b>        | <a href="https://s3-eu-west-1.amazonaws.com/theorem.software/CADverter_TXX_Media/V5-6R2015.THEOREM.win_b64.zip">https://s3-eu-west-1.amazonaws.com/theorem.software/CADverter_TXX_Media/V5-6R2015.THEOREM.win_b64.zip</a> |
| <b>CATIA V5-6R2016</b>        | <a href="https://s3-eu-west-1.amazonaws.com/theorem.software/CADverter_TXX_Media/V5-6R2016.THEOREM.win_b64.zip">https://s3-eu-west-1.amazonaws.com/theorem.software/CADverter_TXX_Media/V5-6R2016.THEOREM.win_b64.zip</a> |
| <b>CATIA V5-6R2017</b>        | <a href="https://s3-eu-west-1.amazonaws.com/theorem.software/CADverter_TXX_Media/V5-6R2017.THEOREM.win_b64.zip">https://s3-eu-west-1.amazonaws.com/theorem.software/CADverter_TXX_Media/V5-6R2017.THEOREM.win_b64.zip</a> |
| <b>CATIA V5-6R2018</b>        | <a href="https://s3-eu-west-1.amazonaws.com/theorem.software/CADverter_TXX_Media/V5-6R2018.THEOREM.win_b64.zip">https://s3-eu-west-1.amazonaws.com/theorem.software/CADverter_TXX_Media/V5-6R2018.THEOREM.win_b64.zip</a> |

## CATIA V5 Media Installation Sequence

The installation of a CATIA V5 Multi-CAD based product must follow a specific installation sequence to ensure that the combination of base products and software updates provided by both Theorem Solutions and Dassault Systems are configured correctly. This includes the base level CATIA V5 installation, the Theorem TXX Multi-CAD platform, the CATIA V5 Service Pack and Hotfix level. Unless the installation sequence is strictly followed there is a potential risk that the CATIA V5 installation will not be configured correctly.

Therefore, the following CATIA application installation sequence MUST be strictly followed to ensure that the correct configuration and updates are available;

1. Install the base GA release of the required version of CATIA V5-6
2. Install the Theorem TXX platform media associated with the required version of CATIA V5-6
3. Install the required CATIA V5-6 Service Pack release
4. Install the required CATIA V5-6 Hotfix release

Note, the installation of the Theorem Multi-CAD translator can be undertaken at any point during this sequence.



## Related Distribution Media

In addition to the translator software itself there are also two other related media distributions available. One is for the installation and configuration of the Theorem User Interface. This is designed as a free-standing user interface for the translator allowing the user to navigate the file system and initiate translations either interactively or in batch using standard drag and drop techniques. The second media distribution contains the Theorem License Manager which is installed on the nominated license server(s) and manages the user access to the purchased volume of concurrent Theorem application licenses.

| Product Code                   | URL for CD image download   |
|--------------------------------|---|
| <b>Theorem User Interface</b>  | <a href="https://s3-eu-west-1.amazonaws.com/theorem.software/CADverter_21.3/CAD_21.3_UI_WIN.01.msi">https://s3-eu-west-1.amazonaws.com/theorem.software/CADverter_21.3/CAD_21.3_UI_WIN.01.msi</a>           |
| <b>Theorem License Manager</b> | <a href="https://s3-eu-west-1.amazonaws.com/theorem.software/LicenseManager/CAD_FLEXLM_11.14_WIN.01.msi">https://s3-eu-west-1.amazonaws.com/theorem.software/LicenseManager/CAD_FLEXLM_11.14_WIN.01.msi</a> |





## New Features / Enhancements

The following new features or enhancements have been introduced with this release

### Multi-CAD CATIA V5 to JT (MC5JT)

| Ref ID | New Feature / Enhancement Description   |
|--------|---|
| 1      | Support for CATIA V5-6R2018 has been implemented with this release  |
| 2      | Associative cross highlighting between 3D dimensions and associated geometry is now maintained during export process. Therefore, the resultant JT output can be interrogated to display the relationship between the dimension and associated geometry elements.  |
| 3      | CATIA V5 Section Views defined within FTA Captures are now exported to the JT file  |
| 4      | The default JT configuration file is now named <b>tess.config</b> . The structure of this file is such that it now supports all variants of CAD to JT translator requirements. The sections of the file that are relevant to the CATIA V5 (MCAD) to JT translator are; <b>JtOptions</b> (for all Theorem related settings that influence the JT output) & <b>GeneralOptions</b> (used to select any general output processing requirements)                         |
| 5      | There is a new menu page available from the CATIA V5 menus <b>Tools&gt;Options&gt;Infrastructure&gt;Theorem&gt;Export JT</b> . This allows the selection of a predefined CADverter Configuration page to control the exporting of JT data from within the CATIA V5 environment. There are two mechanisms available for creating CADverter Configurations. One is to use the CADverter Unified Interface, another is the use of the Configuration Manager Interface. |
| 6      | Transparency appearance settings applied to geometry elements are now maintained in the JT output.  |
| 7      | This version of the translator is built upon the JT Open Toolkit version 10.1.0.0 which supports all versions of the JT file format from 6.1 to 10.0. The default file format version   |

### JT to Multi-CAD CATIA V5 (JTM5)

| Ref ID | New Feature / Enhancement Description                              |
|--------|--|
| 1      | Support for CATIA V5-6R2018 has been implemented with this release |



- |          |   |
|----------|---|
| <b>2</b> | There is a new menu page available from the CATIA V5 menus <b>Tools&gt;Options&gt;Infrastructure&gt;Theorem&gt;Import JT</b> . This allows the selection of a predefined CADverter Configuration page to control the importing of JT data from within the CATIA V5 environment. There are two mechanisms available for creating CADverter Configurations. One is to use the CADverter Unified Interface, another is the use of the Configuration Manager Interface. |
|----------|---|

## Known Limitations and Restrictions

The following limitations and restrictions have been identified during final testing prior to release

Multi-CAD CATIA V5 to/from JT (MC5JT/JTMC5)

**Ref ID**    **Limitations and Restrictions**

|          |   |
|----------|---|
| <b>1</b> | <p>When processing CATIA V5 CATProduct assembly files with subordinate CATIA V4 “.model” files you must have the CATIA V5 cache mode enabled to export any of the V4 geometry. The V4 geometry will be exported as tessellated data only. This is currently a limitation of the Dassault Multi-CAD API’s.</p>   |
| <b>2</b> | <p>The Theorem FLEXIm license manager for this release should be updated to the latest release available. See section on “Related Distribution Media”</p>   |
| <b>3</b> | <p>When running the translator from CATIA V5 to JT there are a few erroneous error messages reported to the screen e.g.</p> <p style="padding-left: 40px;"><i>Error in dictionary<br/>....\B26\win_b64\code\dictionary\MecModLiveInterfaces.iid line 1<br/>Can not add interface '{d0931b72-7702-11d6-be46-0002b35c9330}<br/>CATIBRepModeCont'<br/>The iid is already defined with interface name 'CATIBRepModCont'<br/>Check dictionaries.</i></p> <p>These messages are coming from within the CATIA V5 API’s and do not have a detrimental impact on the translation and therefore can be ignored.</p> |



## Resolved Support Calls

The following list of Support Calls are resolved with this release

| <b>Support Call ID</b>  | <b>Brief Description</b>   |
|-------------------------|--|
| <b>CAS-03505-F0J9H7</b> | JT Import process crashes when processing PMI data   |
| <b>CAS-03440-P0B1R2</b> | JT to V5 Multi-CAD translator creates incorrect structure output when processing PLMXML file |
| <b>CAS-01907-B6X0T4</b> | Unable to process V5 transparency when exporting to JT with V5 Multi-CAD translator          |

