



PRODUCT RELEASE ANNOUNCEMENT

Product Category	CADverter
Product Group	CREO for CATIA V5 Multi-CAD
Release Versions	23.3

Document Type	Product Release Announcement
Status	Released
Revision	1.0
Author	Product Manager
Issued	24/11/2020



PRODUCT RELEASE ANNOUNCEMENT

Contents

History	2
Product Codes	3
Supported Application Revisions	3
Supporting API's	4
Supported Operating Systems	4
Installation Process Considerations	4
Distribution Media	5
New Features / Enhancements	7
Known Limitations and Restrictions.....	8
Resolved Support Calls	9



PRODUCT RELEASE ANNOUNCEMENT



History

Revision	Update Information
1.0	Initial Release



PRODUCT RELEASE ANNOUNCEMENT

Product Codes

Product Code	Product Type	Product Description	Code Type
MC5CRE-B1	Base Product	CATIA V5 (Multi-CAD) to/from CREO (bi-directional)	
MC5CRE-A1	Optional add-on	CATIA V5 (Multi-CAD) to CREO (Bi-directional) Model Based Definition (3D Dimensions & Annotations)	
MC5CRE-U1	Base Product	CATIA V5 (Multi-CAD) to CREO (uni-directional)	
MC5CRE-A2	Optional add-on	CATIA V5 (Multi-CAD) to CREO (uni-directional) Model Based Definition (3D Dimensions & Annotations)	
CREMC5-U1	Base Product	CREO to CATIA V5 (Multi-CAD) (uni-directional) Model Based Definition (3D Dimensions & Annotations)	
CREMC5-A1	Optional add-on	CREO (Bi-directional) to CATIA V5 (Multi-CAD) Model Based Definition (3D Dimensions & Annotations)	

Supported Application Revisions

The following application revisions have been qualified with this release

Application	Revision
CATIA V5	CATIA V5-6R2017 CATIA V5-6R2018 CATIA V5-6R2019 CATIA V5-6R2020
CREO	CREO Parametric 4.0 CREO Parametric 6.0 CREO Parametric 7.0



Supporting API's

The following supporting API support is used

Application	Revision
Dassault Multi-CAD (XCAD)	CATIA V5-6R2017
	CATIA V5-6R2018
	CATIA V5-6R2019
	CATIA V5-6R2020

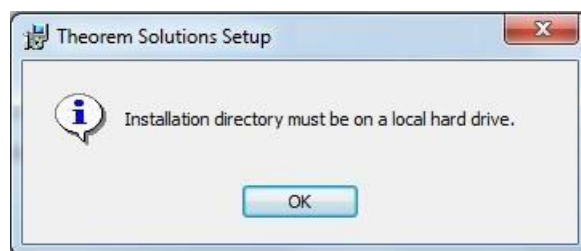
Supported Operating Systems

The following operating systems have been qualified with this release

Operating System	Qualification Status
Windows 10	CATIA: <ul style="list-style-type: none"> • Qualified and fully supported for V5-6R2017, V56R2018, V5-6R2019, V5-6R2020 Creo: Qualified and fully supported for 4.0, 6.0, 7.0

Installation Process Considerations

Starting with version 20.0 of Theorem Solutions applications changes have been made to the installation process. These changes have transitioned from a JAVA based installer package to a standard Microsoft Installer (.msi) package. A current limitation of the Microsoft msi method is that the software cannot be installed directly on to either externally mapped or network drives when installed from a client machine:



Therefore, the installation must be performed to a drive that is local to the machine itself.

If you are attempting to install the software onto a network drive, then please refer to the configuration guide available from the following link
http://www.theorem.com/documentation/Documentation/Client_Configuration.pdf.



PRODUCT RELEASE ANNOUNCEMENT

Distribution Media

CD images of the latest release are available from the following download site. The installation media for the bi-directional product is also the same media when installing a unidirectional variant.

Note! For each CATIA V5 release the CATIA V5 Multi-CAD software requires the relevant Dassault Systems TXX media to be downloaded and installed prior to installing the Theorem Multi-CAD Product Software. Please see the Software Installation guide for further details.

Product	URL for CD image download
Installation Media	CAD 23.3 MC5CRE WIN.01.ms
Unified Interface	CAD 23.2 UI WIN.01.ms
License Server	CAD FLEXLM 11.17 WIN.01.ms
Prerequisite TXX Installation	Select hyperlink to download installation CD
CATIA V5-6R2017	V5-6R2017.THEOREM.win_b64.zip
CATIA V56R2018	V5-6R2018.THEOREM.win_b64.zip
CATIA V5-6R2019	V5-6R2019.THEOREM.win_b64.zip
CATIA V5-6R2020	V5-6R2020.THEOREM.win_b64.zip



PRODUCT RELEASE ANNOUNCEMENT

New Features / Enhancements

The following new features or enhancements have been introduced with this release

Product Impacted	New Feature / Enhancement Description
MC5CRE	Support for Catia V5R2020
MC5CRE	Support for PTC Creo Parametric 7.0
MC5CRE	CATIA update function now works.

PRODUCT RELEASE ANNOUNCEMENT

Known Limitations and Restrictions

The following limitations and restrictions have been identified during final testing prior to release

Ref ID	Limitations and Restrictions
1	<i>Some limitations when processing Model Views with PMI from CREO to V5</i>
2	<i>CREO to V5 translator via CATIA "Insert Existing": Visu and VisuSnap only process assemblies. If translating a part file, an empty CGR file is created.</i>

PRODUCT RELEASE ANNOUNCEMENT

Resolved Support Calls

The following list of Support Calls are resolved with this release

Support	Product	Description	Call ID#
CAS-03070	MC5CRE	MULTICAD - Creo: Update Functionality not working	