



MEVEA Creo Exporter



USER GUIDE

Version 23.3

Revision: 1.0
Issued: 11/12/2020

| | |
|--|----|
| Overview of Theorem | 2 |
| About Theorem | 2 |
| Theorem’s Product Suite | 3 |
| Getting Started | 4 |
| Documentation & Installation Media | 4 |
| Installation & License Configuration | 4 |
| Product Installation | 4 |
| License Configuration | 7 |
| Using the Product | 8 |
| Creo FBX Export | 8 |
| Launching Creo | 8 |
| Using the Theorem Creo Toolkit..... | 8 |
| Notes | 11 |
| Troubleshooting | 11 |
| License Failure | 11 |
| Other error message: | 12 |



Overview of Theorem

About Theorem

Theorem Solutions is a world leader in the field of Engineering Data Services and Solutions. This leadership position stems from the quality of our technology and the people in the company. Quality comes not only from the skills and commitment of our staff, but also from the vigorous industrial use of our technology & services by world leading customers.



We are proud that the vast majority of the world's leading Automotive, Aerospace, Defense, Power Generation and Transportation companies and their Supply chains use our products and services daily. Working closely with our customers, to both fully understand their requirements and feed their input into our development processes has significantly contributed to our technology and industry knowledge.

Theorem Solutions is an independent UK headquartered company incorporated in 1990, with sales and support offices in the UK and USA. Theorem has strong relationships with the major CAD and PLM vendors, including; Autodesk, Dassault Systemes, ICEM Technologies (a Dassault company), PTC, SolidWorks, Spatial Technology and Siemens PLM Software. These relationships enable us to deliver best in class services and solutions to engineering companies worldwide.

Theorem’s Product Suite

Theorem have 3 main Product brands. These are:



TRANSLATE

Direct translation of 3D data to or from an alternate CAD, Visualization or Standards Based format.

See our [website](#) for more detail.



PUBLISH

The creation of documents enriched with 3D content

See our [website](#) for more detail.



VISUALIZE

Visualization for [Augmented \(AR\)](#), [Mixed \(MR\)](#) and [Virtual \(VR\)](#) Reality applications

See our [website](#) for more detail.



Getting Started

Documentation & Installation Media

The latest copy of the User Guide documentation can be found on our web site at:

<http://www.theorem.com/Documentation>

Select **MEVEA Creo Exporter** from the product selection list to locate the Product Release Notes that contain download links. Each product has a specific link that provides user documentation in the form of PDF and Tutorials.



Alternatively, you can request a copy of the software to be shipped on a physical CD.

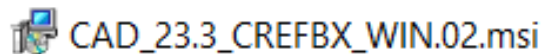
Installation & License Configuration

An installation and license configuration tutorial video can be found via www.theorem.com/documentation and select **MEVEA Creo Exporter** from the product selection list to show the available tutorials and documentation.

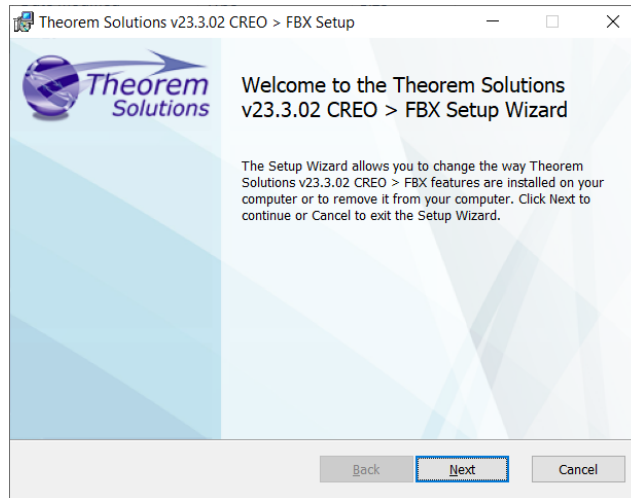
Alternatively, you can follow the steps below. The installation is run from the .msi file download provided. To run any product a valid license file is required. Theorem will provide a node locked license.

Product Installation

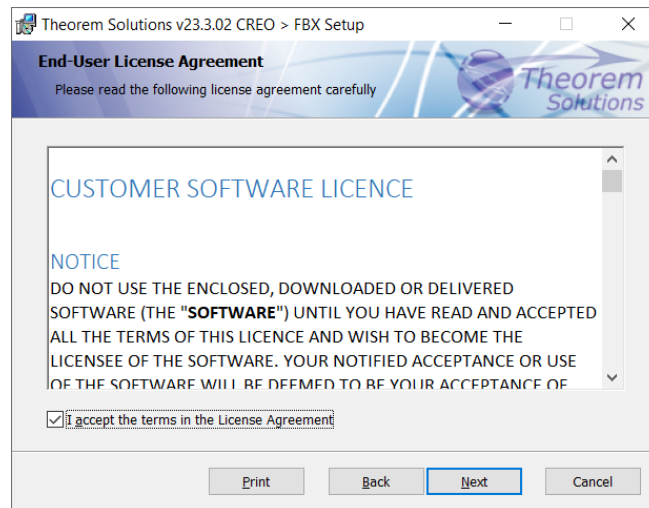
To begin the installation, double click on the .msi file that you have downloaded.



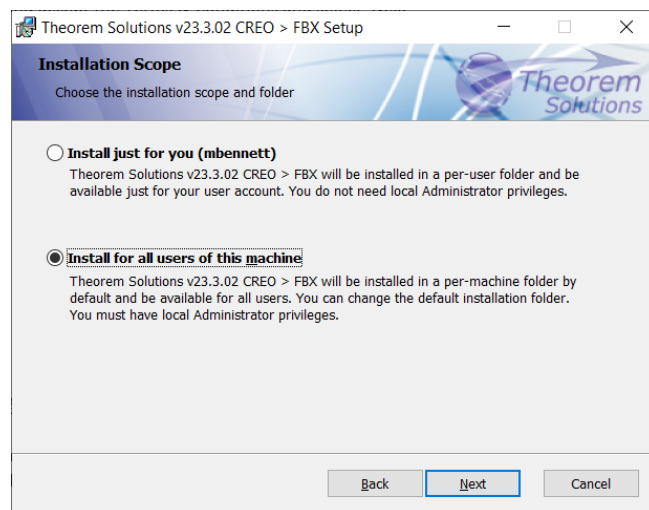
Begin the installation by selecting 'Next'



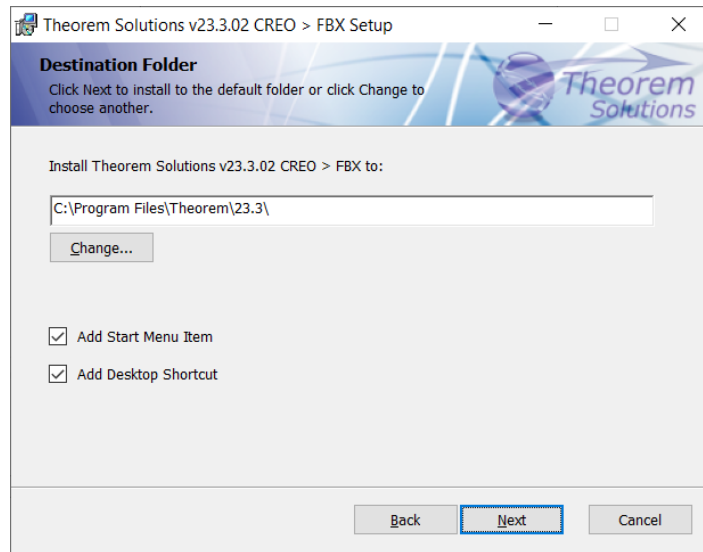
Read and accept the Terms & Conditions and select 'Next'



Select the Users to install for and select 'Next'

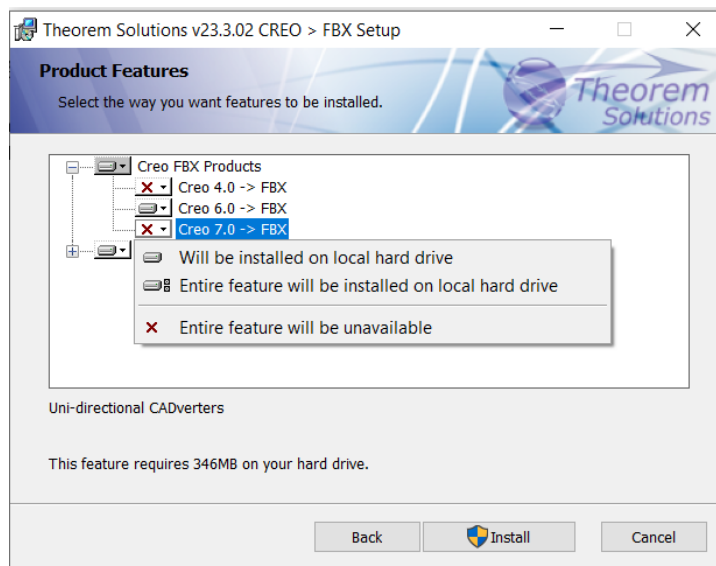


Choose your installation directory and whether Start Menu & Desktop shortcuts should be created



Select the versions of Creo to install for by expanding the list. Any versions that are installed should be selected automatically if the version of Creo was installed directly on the machine (pre-packaged products won't be found).

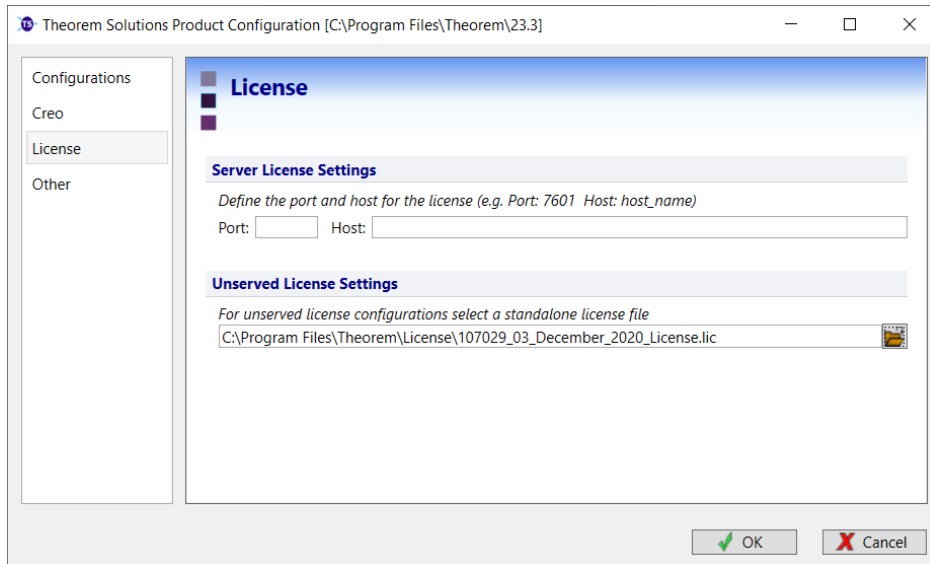
Select 'Install' to begin



License Configuration

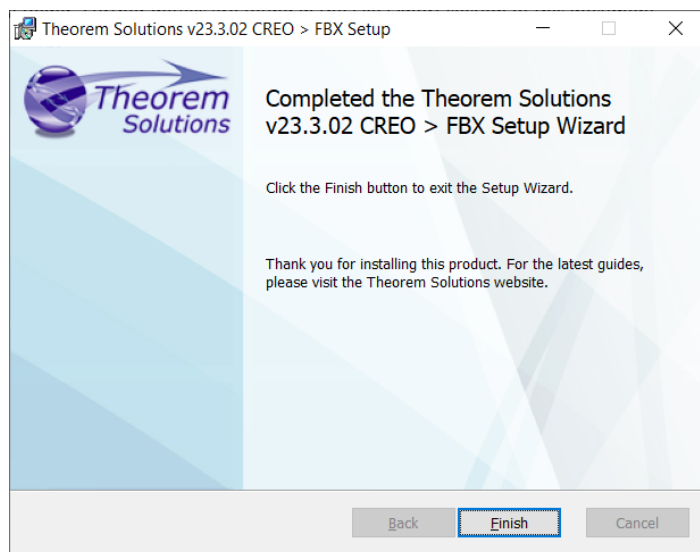
Once complete, the 'Product Configuration' window will appear. The License settings will be visible.

The Mevea Creo Exporter will require a local, node locked license that should have already been provided. To configure this, remove the '7601' value if populated and then use the file explorer to select your license file



Select OK to confirm these options.

Your installation and license configuration is now complete. Select 'Finish' on the installer window.



Using the Product

To use the product, follow the documented steps found in this document under [Creo FBX Export](#) below or follow the tutorials provided via www.theorem.com/documentation and select **MEVEA Creo Exporter** from the product selection list.

Creo FBX Export

Launching Creo

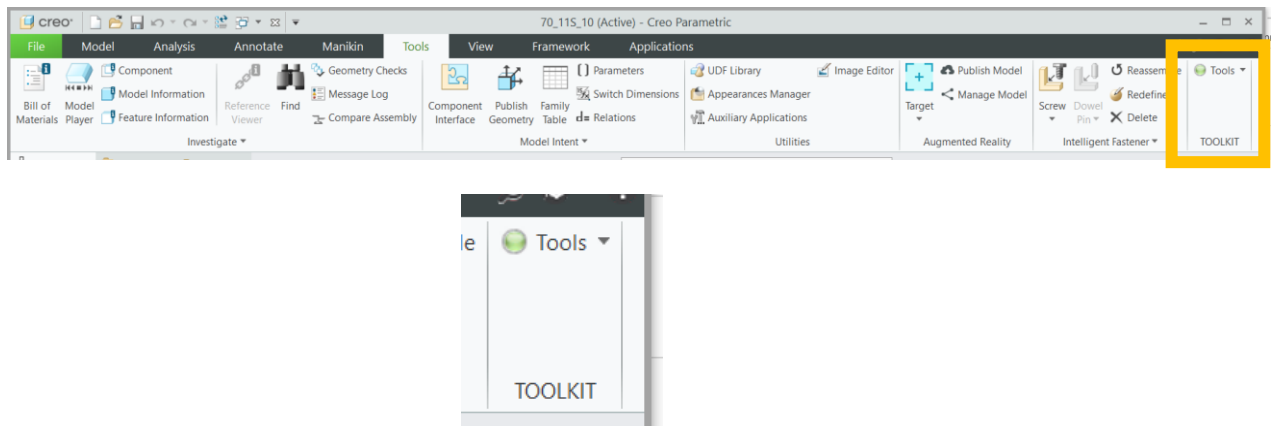
Creo Parametric can be launched via the Theorem Desktop icon created during the installation process or by running the file %Theorem_Install%\bin\protk_start_crX.cmd (where X is your version of Creo e.g. 6).

This will launch Creo with Theorem’s toolkit application.

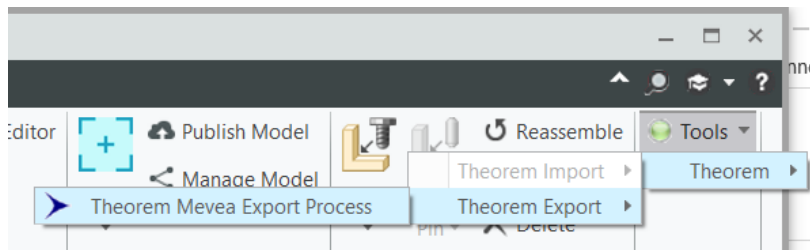
Using the Theorem Creo Toolkit

Once Creo is open, load a file into the window.

Under the ‘Tools’ tab, locate the Toolkit menu:

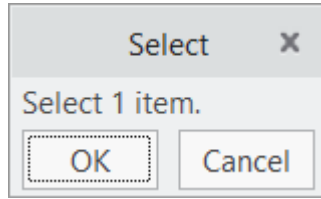


Select ‘Tools’ and locate the Theorem Menu. Select *Theorem > Theorem Export > Theorem Mevea Export Process*



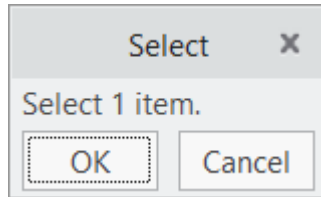
Once selected, a new Menu will appear:





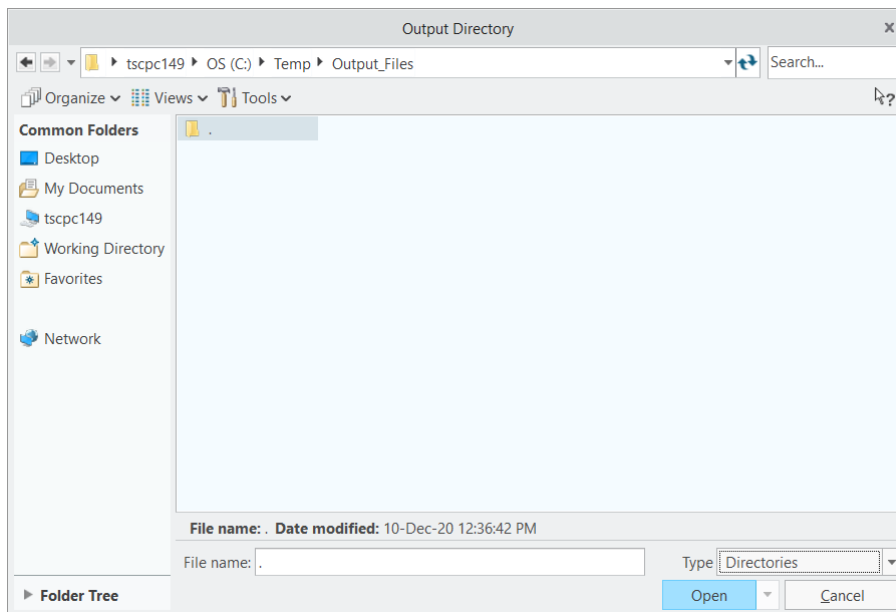
Select the required Sub-Assembly for processing.

Once selected, another menu will appear as below:

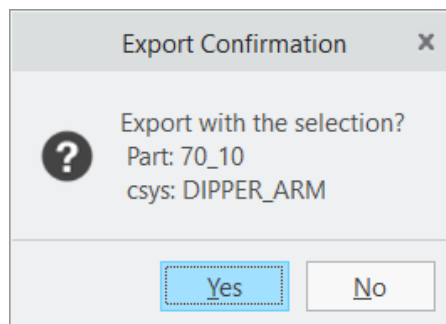


Select the required CSYS to be process.

Now you will be asked to provide the export directory for the data. Select the desired folder and select 'Open'

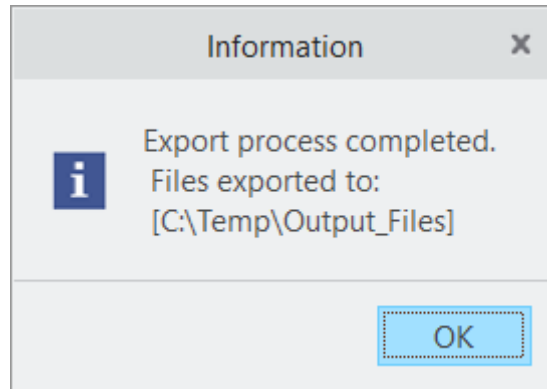


Once both the Assembly and CSYS are selected, a confirmation will appear:



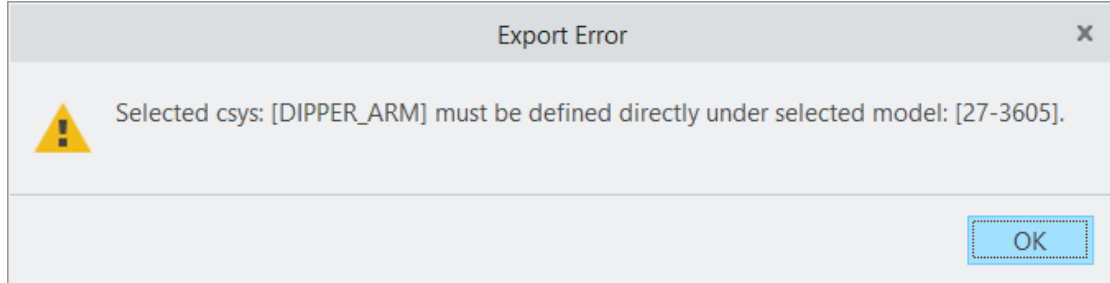
Select 'Yes' to process and export this data.

Once completed, the user will be presented with a new window showing where the output files have been exported:

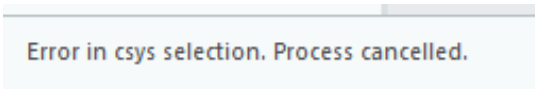


Notes

A User must select a CSYS that is at the same level in the structure as the required geometry. If not, an error will be presented:



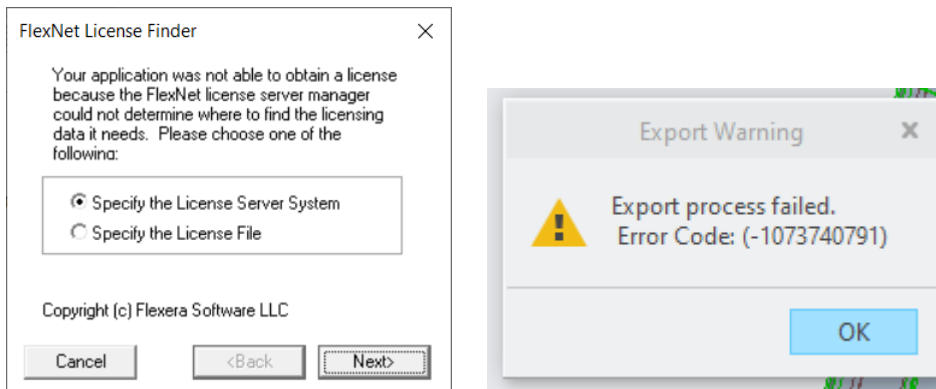
The process will also be cancelled and a message confirming this presented in Creo



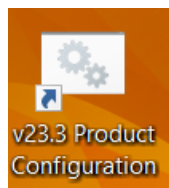
Troubleshooting

License Failure

If your license file has not been set correctly, you will see this pop up message when you try the Creo Export:



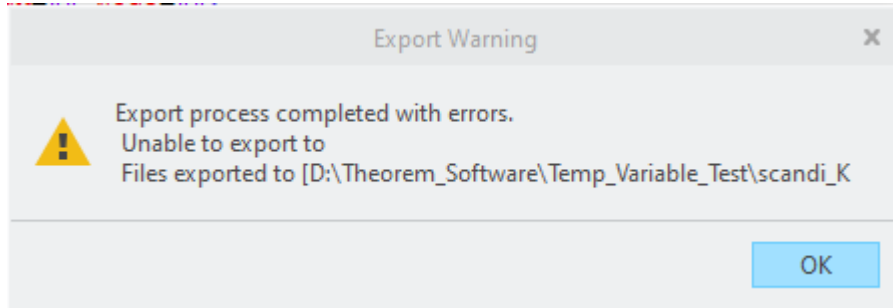
This means that your Node Locked license has not been defined, please ensure that your license is set by running the 'v23.3 Product Configuration' shortcut from the Desktop (as image below) or by running `C:\Program Files\Theorem\23.3\bin\Configure.cmd` and ensuring the license file is correctly selected as seen in [License Configuration](#).



Once set, restart Creo and try the Export process again.

Other error message:

If you receive this error:



This may be an error due to unrecognised characters being defined in the temporary path. Please run the 'v23.3 Product Configuration' shortcut from the Desktop or by running **your_install_path*\bin\Configure.cmd* and ensure the following path is defined to a path only containing ASCII characters, then try your export again.

