



Product Release Announcement

Product Category	CADTranslate
Product Group	CATIA V5 <> ICEM SURF
Product Release Version	27.0

Document Type	Product Release Announcement
Document Status	Released
Document Revision	1.0
Document Author	Product Manager
Document Issued	09/04/2024

📍 THEOREM HOUSE
MARSTON PARK
BONEHILL RD
TAMWORTH
B78 3HU
UNITED KINGDOM

☎ +44(0)1827 305 350

📍 THEOREM SOLUTIONS INC.
100 WEST BIG BEAVER
TROY
MICHIGAN
48084
USA

☎ +(513) 576 1100

Table of Contents

History	3
Product Codes.....	4
Supported Application Revisions	5
Supported Operating Systems	5
Supporting API's	5
Installation Process Considerations	5
Distribution Media.....	6
New Features / Enhancements	7
V5 - SDB.....	7
Known Limitations and Restrictions.....	8
CATIA V5 to ICEM SURF DB (CA5SDB)	8
ICEM SURF DB to CATIA V5 (CA5SDB)	8
General.....	8
Resolved Support Calls	9

History

Revision	Update Information
1.0	Initial document release for Version 27.0

Product Codes

Product Code	Product Description
CA5SDB-B1	CATIA V5 to CATIA ICEM Surf Bi-directional
CA5SDB-I1	CATIA V5 to CATIA ICEM Surf Publish Bi-directional

Supported Application Revisions

The following application revisions have been qualified with this release.

Application	Revision
CATIA V4	
CATIA V5	V5R2019(R29), V5R2020(R30), V5R2021(R31), V5R2022(R32), V5R2023(R33) V5R2024(R34)
ICEM Surf	Up to 2020

Supported Operating Systems

The following operating systems have been qualified with this release.

Operating System	Qualification Status
Window 10	Qualified and fully supported

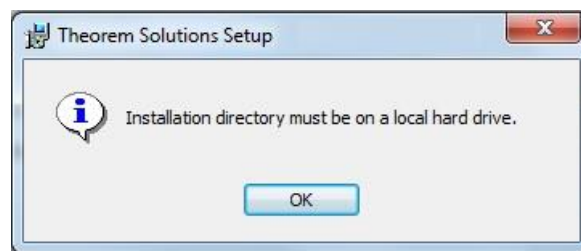
Supporting API's

The following supporting API versions are used

Application	Revision
Surf DB	4.12

Installation Process Considerations

Starting with version 20.0 of Theorem Solutions applications changes have been made to the installation process. These changes have transitioned from a JAVA based installer package to a standard Microsoft Installer (.msi) package. A current limitation of the Microsoft msi method is that the software cannot be installed directly on to either externally mapped or network drives when installed from a client machine:



Therefore, the installation must be performed to a drive that is local to the machine itself.

If you are attempting to install the software onto a network drive, then please refer to the configuration guide available from the following link:

http://www.theorem.com/documentation/Documentation/Client_Configuration.pdf.

Distribution Media

CD images of the latest release are available from the following download site. The installation media for the bi-directional product is also the same media when installing a uni-directional variant.

Product Codes	Select link to download CD images
All Product Codes for all supported versions of Creo	CAD 27.0 CA5SDB WIN.01.msi
Theorem User Interface	CAD 27.0 UI WIN.01.msi
Theorem License Manager	CAD FLEXLM 11.19 WIN.01.msi

New Features / Enhancements

The following new features or enhancements have been introduced with this release.

V5 - SDB

Ref ID	New Feature / Enhancement Description
1	Support for R2024

Known Limitations and Restrictions

The following limitations and restrictions have been identified prior to release.

CATIA V5 to ICEM SURF DB (CA5SDB)

Ref ID	Limitations and Restrictions
--------	------------------------------

ICEM SURF DB to CATIA V5 (CA5SDB)

Ref ID	Limitations and Restrictions
--------	------------------------------

General

Ref ID	Limitations and Restrictions
--------	------------------------------

Resolved Support Calls


The following list of Support Calls are resolved with this release.

Support Call ID	Brief Description
-----------------	-------------------




THEOREM
SOLUTIONS


**UK, Europe and Asia
Pacific Regions**

 THEOREM HOUSE
MARSTON PARK
BONEHILL RD
TAMWORTH
B78 3HU
UNITED KINGDOM


 sales@theorem.com

 +44 (0) 1827 305 350

USA and the America

 THEOREM SOLUTIONS INC
100 WEST BIG BEAVER
TROY
MICHIGAN
48084
USA

 Sales-usa@theorem.com

 +(513) 576 1100

 **THEOREM.COM**