



## Product Release Announcement

Product Category	CADTranslate
Product Group	CATIA V5 for JT
Product Release Version	28.0

Document Type	Product Release Announcement
Document Status	Released
Document Revision	1.0
Document Author	Product Manager
Document Issued	09/06/2025

📍 THEOREM HOUSE  
MARSTON PARK  
BONEHILL RD  
TAMWORTH  
B78 3HU  
UNITED KINGDOM

☎ +44(0)1827 305 350

📍 THEOREM SOLUTIONS INC.  
100 WEST BIG BEAVER  
TROY  
MICHIGAN  
48084  
USA

☎ +(513) 576 1100

## Table of Contents

<b>History .....</b>	<b>3</b>
<b>Product Codes.....</b>	<b>4</b>
<b>Supported Application Revisions .....</b>	<b>5</b>
<b>Supported Operating Systems .....</b>	<b>5</b>
<b>Installation Process Considerations .....</b>	<b>6</b>
<b>Distribution Media.....</b>	<b>6</b>
<b>New Features / Enhancements .....</b>	<b>7</b>
CATIA V5 - JT .....	7
<b>Known Limitations and Restrictions.....</b>	<b>8</b>
CATIA V5 to JT (CA5JT) .....	8
JT to CATIA V5 (JTCA5) .....	8
General.....	8
<b>Resolved Support Calls .....</b>	<b>9</b>

## History

Revision	Update Information
1.0	Initial document release for Version 28.0

## Product Codes

Product Code	Product Description
<b>CA5JT-U1</b>	CATIA V5 (CAA Based) to JT (uni-directional)
<b>JTCA5-U1</b>	JT to CATIA V5 (CAA Based ) (uni-directional)
<b>CA5JT-A5</b>	CATIA V5 (CAA Based ) to JT (uni-directional) with PMI Add On
<b>CA5JT-A6</b>	CATIA V5 (CAA Based ) to JT (uni-directional) with Electrical Add On
<b>CA5JT-A7</b>	CATIA V5 (CAA Based ) to JT (uni-directional) with 3D PDF Add On
<b>CA5JT-A8</b>	CATIA V5 (CAA Based ) to JT (uni-directional) with Composite Services Add On
<b>JTCA5-A1</b>	JT to CATIA V5 (CAA Based ) (uni-directional) with 3DPDF Add On
<b>JTCA5-A2</b>	JT to CATIA V5 (CAA Based ) (uni-directional) with 3DXML Export Module
<b>CATJT-U1</b>	CATIA V4 to JT (uni-directional)
<b>CAGJT-U1</b>	Combined CATIA V4 & CATIA V5 to JT (uni-directional)
<b>CAGJT-U2</b>	Combined CATIA V4 & CATIA V5 to JT (uni-directional) with PMI Add On

## Supported Application Revisions

The following application revisions have been qualified with this release.

Application	Revision
CATIA V4	All revisions
CATIA V5	CATIA V5-6R2020 CATIA V5-6R2021 CATIA V5-6R2022 CATIA V5-6R2023 CATIA V5-6R2024 CATIA V5-6R2025
JTOpen	JTK 11.6

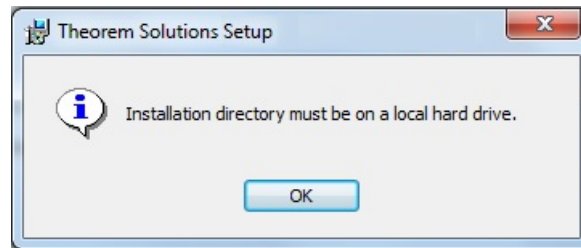
## Supported Operating Systems

The following operating systems have been qualified with this release

Operating System	Qualification Status
Windows 10 Windows 11	Qualified and fully supported for CATIA V4 CATIA V5-6R2020 CATIA V5-6R2021 CATIA V5-6R2022 CATIA V5-6R2023 CATIA V5-6R2024 CATIA V5-6R2025

## Installation Process Considerations

Starting with version 20.0 of Theorem Solutions applications changes have been made to the installation process. These changes have transitioned from a JAVA based installer package to a standard Microsoft Installer (.msi) package. A current limitation of the Microsoft msi method is that the software cannot be installed directly on to either externally mapped or network drives when installed from a client machine:



Therefore, the installation must be performed to a drive that is local to the machine itself. If you are attempting to install the software onto a network drive, then please refer to the configuration guide available from the following link:

[http://www.theorem.com/documentation/Documentation/Client\\_Configuration.pdf](http://www.theorem.com/documentation/Documentation/Client_Configuration.pdf).

## Distribution Media

CD images of the latest release are available from the following download site. The installation media for the bi-directional product is also the same media when installing a uni-directional variant.

Product Codes	Select link to download CD images
All Product Codes for all supported versions of CATIA V5	<a href="#">CAD 28.0 CA5JT WIN.01.msi</a>
Theorem User Interface	<a href="#">CAD 28.0 UI WIN.01.msi</a>
Theorem License Manager	<a href="#">CAD FLEXLM 11.19 WIN.01.msi</a>

## New Features / Enhancements

The following new features or enhancements have been introduced with this release.

### CATIA V5 - JT

Ref ID	New Feature / Enhancement Description
1	Added support for CATIA V5-6R2025
2	Integrated with JT Open Libraries version 11.6
3	General bug fixes and improvements
4	<p>New Translator Options:</p> <ul style="list-style-type: none"> <li>• READ_PMI_STOP – Stops CATIA read if Read PMI is enabled and no Theorem PMI add-on license available.</li> <li>• READ_COMPOSITES_STOP - Stops CATIA read if Read Composites is enabled and no Theorem Composite add-on license available.</li> <li>• READ_PARAMETERSSETS / READ_PARAMETERSSETS_OFF - Enable or disable creation of a group for a parameter node in specification tree.</li> <li>• READ_GEOMETRY_MATCH_PATH - Reads PMI associated geometry if its Path Element matches rather than its Persistent ID. For instance, extracting a face from a solid maintains the same Persistent ID as the face itself is unchanged.</li> <li>• ALLOW_LARGE_NURBS / DONT_ALLOW_LARGE_NURBS - Stops surface supporting faces being trimmed back to face boundary.</li> <li>• ALLOW_LARGE_NURBS_TOL / DONT_ALLOW_LARGE_NURBS - Rejects surface if the control point bounding box exceeds LARGE_NURBS_TOL .</li> <li>• WR_REF_PLANES – Writes planes to the PMI tree as Reference Planes.</li> </ul>

## Known Limitations and Restrictions

The following limitations and restrictions have been identified prior to release.

### CATIA V5 to JT (CA5JT)

Ref ID	Limitations and Restrictions

### JT to CATIA V5 (JTCA5)

Ref ID	Limitations and Restrictions

### General

Ref ID	Limitations and Restrictions

## Resolved Support Calls

The following list of Support Calls are resolved with this release.

Support Call ID	Brief Description
REQ-1278	Validate Theorem Composite License is available prior to processing translation. Added option: READ_PMI_STOP
TH-1191	Missing PMI associations in the JT file. Added option: READ_GEOMETRY_MATCH_PATH



#### **UK, Europe and Asia Pacific Regions**



THEOREM HOUSE  
MARSTON PARK  
BONEHILL RD  
TAMWORTH  
B78 3HU  
UNITED KINGDOM



[sales.theorem@techsoft3d.com](mailto:sales.theorem@techsoft3d.com)



+44 (0) 1827 305 350

#### **USA and the America**



THEOREM SOLUTIONS INC  
100 WEST BIG BEAVER  
TROY  
MICHIGAN  
48084  
USA



[sales-usa.theorem@techsoft3d.com](mailto:sales-usa.theorem@techsoft3d.com)



+(513) 576 1100



**THEOREM.COM**