



PRODUCT RELEASE ANNOUNCEMENT

Product Category	TRANSLATE
Product Group	CATIA V5 for JT
Product Release Version	26.0

Document Type	Product Release Announcement
Document Status	Released
Document Revision	1.0
Document Author	Product Manager
Document Issued	19/05/2023



Contents

History	2
Product Codes	3
Supported Application Revisions.....	4
Supported Operating Systems.....	4
Installation Process Considerations.....	5
Distribution Media.....	5
New Features / Enhancements	6
CATIA V5 - JT	6
Known Limitations and Restrictions	7
CATIA V5 to JT (CA5JT).....	7
JT to CATIA V5 (JTCA5).....	7
General	7
Resolved Support Calls	8



History

Revision	Update Information
1.0	Initial document release for Version 26.0

Product Codes

Product Code	Product Description
CA5JT-U1	CATIA V5 (CAA Based) to JT (uni-directional)
JTCA5-U1	JT to CATIA V5 (CAA Based) (uni-directional)
CA5JT-A5	CATIA V5 (CAA Based) to JT (uni-directional) with PMI Add On
CA5JT-A6	CATIA V5 (CAA Based) to JT (uni-directional) with Electrical Add On
CA5JT-A7	CATIA V5 (CAA Based) to JT (uni-directional) with 3D PDF Add On
JTCA5-A1	JT to CATIA V5 (CAA Based) (uni-directional) with 3DPDF Add On
JTCA5-A2	JT to CATIA V5 (CAA Based) (uni-directional) with 3DXML Export Module
CATJT-U1	CATIA V4 to JT (uni-directional)
CAGJT-U1	Combined CATIA V4 & CATIA V5 to JT (uni-directional)
CAGJT-U2	Combined CATIA V4 & CATIA V5 to JT (uni-directional) with PMI Add On



Supported Application Revisions

The following application revisions have been qualified with this release

Application	Revision
CATIA V4	All revisions
CATIA V5	CATIA V5-6R2019 CATIA V5-6R2020 CATIA V5-6R2021 CATIA V5-6R2022 CATIA V5-6R2023
JTOpen	JTK 11.3

Supported Operating Systems

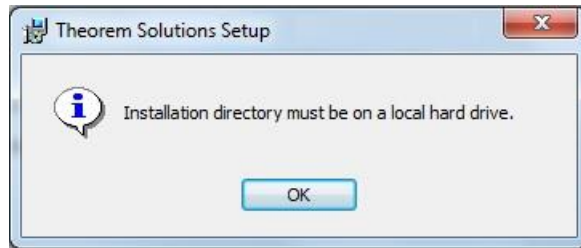
The following operating systems have been qualified with this release

Operating System	Qualification Status
Window 10	Qualified and fully supported for CATIA V4 CATIA V5-6R2019 CATIA V5-6R2020 CATIA V5-6R2021 CATIA V5-6R2022 CATIA V5-6R2023



Installation Process Considerations

Starting with version 20.0 of Theorem Solutions applications changes have been made to the installation process. These changes have transitioned from a JAVA based installer package to a standard Microsoft Installer (.msi) package. A current limitation of the Microsoft msi method is that the software cannot be installed directly on to either externally mapped or network drives when installed from a client machine:



Therefore, the installation must be performed to a drive that is local to the machine itself.

If you are attempting to install the software onto a network drive, then please refer to the configuration guide available from the following link http://www.theorem.com/documentation/Documentation/Client_Configuration.pdf.

Distribution Media

CD images of the latest release are available from the following download site. The installation media for the bi-directional product is also the same media when installing a uni-directional variant.

Product Codes	Select link to download CD images
All Product Codes for all supported versions of CATIA V5	CAD_26.0_CA5JT_WIN.02.msi
Theorem User Interface	CAD_26.0_UI_WIN.02.msi
Theorem License Manager	CAD_FLEXLM_11.17_WIN.01.msi



New Features / Enhancements

The following new features or enhancements have been introduced with this release

CATIA V5 - JT

Ref ID	New Feature / Enhancement Description
1	Added support for CATIA V5-6R2023
2	Integrated with JT Open Libraries version 11.3
3	Theorem XR Upload Menu now includes Visualization Pipeline Output Formats (FBX, GLTF, JT, VRED).
4	General bug fixes and improvements

Known Limitations and Restrictions

The following limitations and restrictions have been identified prior to release

CATIA V5 to JT (CA5JT)

Ref ID Limitations and Restrictions

1	If Flex LM diagnostics are enabled in ts_env.bat the CATIA V5 > JT process will fail to produce a JT file set FLEXLM_DIAGNOSTICS=3
----------	---

JT to CATIA V5 (JTCA5)

Ref ID Limitations and Restrictions

--	--

General

Ref ID Limitations and Restrictions

--	--



Resolved Support Calls

The following list of Support Calls are resolved with this release

Support Call ID	Brief Description
TH-133	Conversion is missing elements
TH-311	PMI missing after translation
TH-358	Translating an assembly with the option StructureOutputType = STEPBOM_E2 has error
TH-363	Translation will error for same part using same theorem config when it's done with CV5R32 Theorem CADVerter 25.1
TH-477	Error when creating monolithic JT from Catia V5