



---

## PRODUCT RELEASE ANNOUNCEMENT

---

Product Category	<b>TRANSLATE</b>
Product Group	CATIA V5 for JT
Product Release Version	25.1

Document Type	<b>Product Release Announcement</b>
Document Status	Released
Document Revision	1.0
Document Author	Product Manager
Document Issued	14/06/2022



## Contents

History .....	2
Product Codes .....	3
Supported Application Revisions.....	4
Supported Operating Systems.....	4
Installation Process Considerations.....	5
Distribution Media.....	5
New Features / Enhancements .....	6
CATIA V5 - JT .....	6
Known Limitations and Restrictions   .....	7
CATIA V5 to JT (CA5JT).....	7
JT to CATIA V5 (JTCA5).....	7
General .....	7
Resolved Support Calls .....	8



## History

Revision	Update Information
1.0	Initial document release for Version 25.1

Product Codes

<b>Product Code</b>	<b>Product Description</b>
<b>CA5JT-U1</b>	CATIA V5 (CAA Based) to JT (uni-directional)
<b>JTCA5-U1</b>	JT to CATIA V5 (CAA Based ) (uni-directional)
<b>CA5JT-A5</b>	CATIA V5 (CAA Based ) to JT (uni-directional) with PMI Add On
<b>CA5JT-A6</b>	CATIA V5 (CAA Based ) to JT (uni-directional) with Electrical Add On
<b>CA5JT-A7</b>	CATIA V5 (CAA Based ) to JT (uni-directional) with 3D PDF Add On
<b>JTCA5-A1</b>	JT to CATIA V5 (CAA Based ) (uni-directional) with 3DPDF Add On
<b>JTCA5-A2</b>	JT to CATIA V5 (CAA Based ) (uni-directional) with 3DXML Export Module
<b>CATJT-U1</b>	CATIA V4 to JT (uni-directional)
<b>CAGJT-U1</b>	Combined CATIA V4 & CATIA V5 to JT (uni-directional)
<b>CAGJT-U2</b>	Combined CATIA V4 & CATIA V5 to JT (uni-directional) with PMI Add On



## Supported Application Revisions

The following application revisions have been qualified with this release

<b>Application</b>	<b>Revision</b>
<b>CATIA V4</b>	All revisions
<b>CATIA V5</b>	CATIA V5-6R2019 CATIA V5-6R2020 CATIA V5-6R2021 CATIA V5-6R2022
<b>JTOpen</b>	JTK 11.0

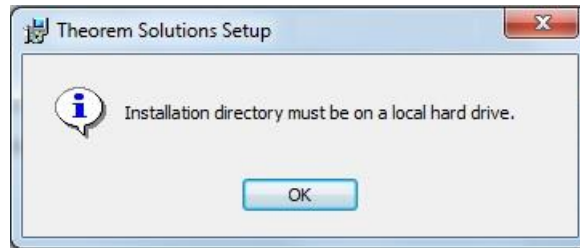
## Supported Operating Systems

The following operating systems have been qualified with this release

<b>Operating System</b>	<b>Qualification Status</b>
<b>Window 10</b>	Qualified and fully supported for CATIA V4 CATIA V5-6R2019 CATIA V5-6R2020 CATIA V5-6R2021 CATIA V5-6R2022

## Installation Process Considerations

Starting with version 20.0 of Theorem Solutions applications changes have been made to the installation process. These changes have transitioned from a JAVA based installer package to a standard Microsoft Installer (.msi) package. A current limitation of the Microsoft msi method is that the software cannot be installed directly on to either externally mapped or network drives when installed from a client machine:



Therefore, the installation must be performed to a drive that is local to the machine itself.

If you are attempting to install the software onto a network drive, then please refer to the configuration guide available from the following link [http://www.theorem.com/documentation/Documentation/Client\\_Configuration.pdf](http://www.theorem.com/documentation/Documentation/Client_Configuration.pdf).

## Distribution Media

CD images of the latest release are available from the following download site. The installation media for the bi-directional product is also the same media when installing a uni-directional variant.

Product Codes	Select link to download CD images
<b>All Product Codes for all supported versions of CATIA V5</b>	<a href="#">CAD 25.1 CA5JT WIN.01.msi</a>
<b>Theorem User Interface</b>	<a href="#">CAD 25.1 UI WIN.01.msi</a>
<b>Theorem License Manager</b>	<a href="#">CAD FLEXLM 11.17 WIN.01.msi</a>



## New Features / Enhancements

The following new features or enhancements have been introduced with this release

CATIA V5 - JT

Ref ID	New Feature / Enhancement Description
1	CATIA V5 Read: Added support for CATIA V5-6R2022
2	Integrated with JT Open Libraries version 11.0
3	Updated Daimler support
4	Improved Theorem-XR Upload menu
5	CATIA V5 FTA NOA URLs are now supported
6	General bug fixes and improvements

## Known Limitations and Restrictions |

The following limitations and restrictions have been identified prior to release

CATIA V5 to JT (CA5JT)

Ref ID	Limitations and Restrictions

JT to CATIA V5 (JTCA5)

Ref ID	Limitations and Restrictions

General

Ref ID	Limitations and Restrictions



## Resolved Support Calls

The following list of Support Calls are resolved with this release

<b>Support Call ID</b>	<b>Brief Description</b>
<b>CAS-04696-F6Y7P5</b>	autoNameSanitize=true causes error
<b>CAS-04708-V7G1Y6</b>	Data not Daimler compliant
<b>CAS-04723-L3G1P9</b>	Data not Daimler compliant
<b>CAS-04759-V8T7P0</b>	Properties put onto the wrong body in JT

