



PRODUCT RELEASE ANNOUNCEMENT

Product Category	TRANSLATE
Product Group	CATIA V5 for JT
Product Release Version	24.2

Document Type	Product Release Announcement
Document Status	Released
Document Revision	1.0
Document Author	Product Manager
Document Issued	18/10/2021



Contents

History	2
Product Codes	3
Supported Application Revisions.....	4
Supported Operating Systems.....	4
Installation Process Considerations.....	5
Distribution Media.....	5
New Features / Enhancements	6
CATIA V5 - JT	6
Known Limitations and Restrictions 	7
CATIA V5 to JT (CA5JT).....	7
JT to CATIA V5 (JTCA5).....	7
General	7
Resolved Support Calls	8



History

Revision	Update Information
1.0	Initial document release for Version 24.2



Product Codes

Product Code	Product Description
CA5JT-U1	CATIA V5 (CAA Based) to JT (uni-directional)
JTCA5-U1	JT to CATIA V5 (CAA Based) (uni-directional)
CA5JT-A5	CATIA V5 (CAA Based) to JT (uni-directional) with PMI Add On
CA5JT-A6	CATIA V5 (CAA Based) to JT (uni-directional) with Electrical Add On
CA5JT-A7	CATIA V5 (CAA Based) to JT (uni-directional) with 3D PDF Add On
JTCA5-A1	JT to CATIA V5 (CAA Based) (uni-directional) with 3DPDF Add On
JTCA5-A2	JT to CATIA V5 (CAA Based) (uni-directional) with 3DXML Export Module
CATJT-U1	CATIA V4 to JT (uni-directional)
CAGJT-U1	Combined CATIA V4 & CATIA V5 to JT (uni-directional)
CAGJT-U2	Combined CATIA V4 & CATIA V5 to JT (uni-directional) with PMI Add On



Supported Application Revisions

The following application revisions have been qualified with this release

Application	Revision
CATIA V4	All revisions
CATIA V5	CATIA V5-6R2018, CATIA V5-6R2019, CATIA V5-6R2020 & CATIA V5-6R2021
JTOpen	JTK 10.8

Supported Operating Systems

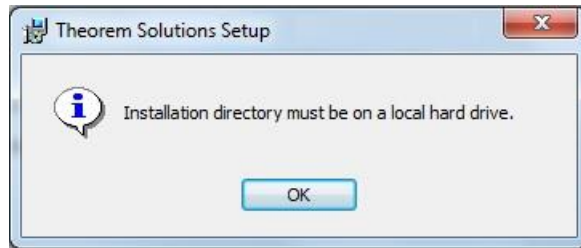
The following operating systems have been qualified with this release

Operating System	Qualification Status
Window 10	Qualified and fully supported for CATIA V4, CATIA V5-6R2018, CATIA V5-6R2019, CATIA V5-6R2020 & CATIA V5-6R2021
Windows Server 2016	Qualified and fully supported for CATIA V4, CATIA V5-6R2018, CATIA V5-6R2019, CATIA V5-6R2020 & CATIA V5-6R2021



Installation Process Considerations

Starting with version 20.0 of Theorem Solutions applications changes have been made to the installation process. These changes have transitioned from a JAVA based installer package to a standard Microsoft Installer (.msi) package. A current limitation of the Microsoft msi method is that the software cannot be installed directly on to either externally mapped or network drives when installed from a client machine:



Therefore, the installation must be performed to a drive that is local to the machine itself.

If you are attempting to install the software onto a network drive, then please refer to the configuration guide available from the following link http://www.theorem.com/documentation/Documentation/Client_Configuration.pdf.

Distribution Media

CD images of the latest release are available from the following download site. The installation media for the bi-directional product is also the same media when installing a uni-directional variant.

Product Codes	Select link to download CD images
All Product Codes for all supported versions of CATIA V5	CAD 24.2 CA5JT WIN.01.msi
Theorem User Interface	CAD 24.0 UI WIN.01.msi
Theorem License Manager	CAD FLEXLM 11.17 WIN.01.msi



New Features / Enhancements

The following new features or enhancements have been introduced with this release

CATIA V5 - JT

Ref ID	New Feature / Enhancement Description
1	CATIA V5 Read: Added support for CATIA V5-6R2021
2	JT Write: Integrated with JT Open Libraries version 10.8
3	JT Write: Updated Daimler configuration file to support Smart Topology Table
4	General: Updated menu for Theorem Visualization Pipeline upload allowing Project & Configuration selection (Tools > Options > Infrastructure > Theorem > Theorem-XR)



Known Limitations and Restrictions |

The following limitations and restrictions have been identified prior to release

CATIA V5 to JT (CA5JT)

Ref ID Limitations and Restrictions

Ref ID	Limitations and Restrictions

JT to CATIA V5 (JTCA5)

Ref ID Limitations and Restrictions

Ref ID	Limitations and Restrictions

General

Ref ID Limitations and Restrictions

1	TDP Upload process for Theorem Visualization Pipeline returns a project ID error. To be corrected at a future release.
2	Current release is supported by V24.0 of Theorem Unified Interface. To be updated when V24.2 is released.



Resolved Support Calls

The following list of Support Calls are resolved with this release

Support Call ID	Brief Description
CAS-04597-C4B2D1	Error code descriptions in Documentation
CAS-04517-H8W7X2	Data translation with geometry errors

