



PRODUCT RELEASE ANNOUNCEMENT

Product Category	TRANSLATE
Product Group	CATIA V5 for JT
Product Release Version	24.0

Document Type	Product Release Announcement
Document Status	Released
Document Revision	2.0
Document Author	Product Manager
Document Issued	20/04/2021



Contents

History	2
Product Codes	3
Supported Application Revisions.....	4
Supported Operating Systems.....	4
Installation Process Considerations.....	5
Distribution Media.....	5
New Features / Enhancements	6
CATIA V5 to JT (CA5JT).....	6
JT to CATIA V5 (JTCA5).....	6
Known Limitations and Restrictions.....	7
CATIA V5 to JT (CA5JT).....	7
JT to CATIA V5 (JTCA5).....	7
General	7
Resolved Support Calls	8



History

Revision	Update Information
1.0	Initial document release for Version 24.0
2.0	Updated Resolved Support Calls with missing case number

Product Codes

Product Code	Product Description
CA5JT-U1	CATIA V5 (CAA Based) to JT (uni-directional)
JTCA5-U1	JT to CATIA V5 (CAA Based) (uni-directional)
CA5JT-A5	CATIA V5 (CAA Based) to JT (uni-directional) with PMI Add On
CA5JT-A6	CATIA V5 (CAA Based) to JT (uni-directional) with Electrical Add On
CA5JT-A7	CATIA V5 (CAA Based) to JT (uni-directional) with 3D PDF Add On
JTCA5-A1	JT to CATIA V5 (CAA Based) (uni-directional) with 3DPDF Add On
JTCA5-A2	JT to CATIA V5 (CAA Based) (uni-directional) with 3DXML Export Module
CATJT-U1	CATIA V4 to JT (uni-directional)
CAGJT-U1	Combined CATIA V4 & CATIA V5 to JT (uni-directional)
CAGJT-U2	Combined CATIA V4 & CATIA V5 to JT (uni-directional) with PMI Add On



Supported Application Revisions

The following application revisions have been qualified with this release

Application	Revision
CATIA V4	All revisions
CATIA V5	CATIA V5-6R2018, CATIA V5-6R2019, CATIA V5-6R2020 & CATIA V5-6R2021
JTOpen	JTK 10.8

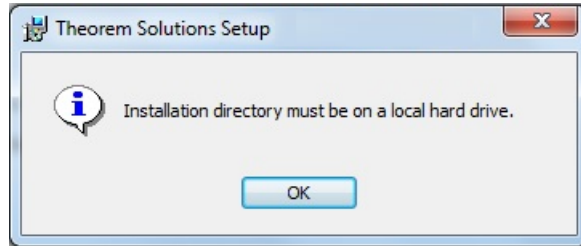
Supported Operating Systems

The following operating systems have been qualified with this release

Operating System	Qualification Status
Window 10 64bit	Qualified and fully supported for CATIA V4, CATIA V5-6R2018, CATIA V5-6R2019, CATIA V5-6R2020 & CATIA V5-6R2021
Windows Server 2016	Qualified and fully supported for CATIA V4, CATIA V5-6R2018, CATIA V5-6R2019, CATIA V5-6R2020 & CATIA V5-6R2021

Installation Process Considerations

Starting with version 20.0 of Theorem Solutions applications changes have been made to the installation process. These changes have transitioned from a JAVA based installer package to a standard Microsoft Installer (.msi) package. A current limitation of the Microsoft msi method is that the software cannot be installed directly on to either externally mapped or network drives when installed from a client machine:



Therefore, the installation must be performed to a drive that is local to the machine itself.

If you are attempting to install the software onto a network drive, then please refer to the configuration guide available from the following link
http://www.theorem.com/documentation/Documentation/Client_Configuration.pdf.

Distribution Media

CD images of the latest release are available from the following download site. The installation media for the bi-directional product is also the same media when installing a uni-directional variant.

Product Codes	Select link to download CD images
All Product Codes for all supported versions of CATIA V5	https://s3-eu-west-1.amazonaws.com/theorem.software/CADverter_24.0/CAD_24.0_CA5JT_WIN.01.msi
Theorem User Interface	https://s3-eu-west-1.amazonaws.com/theorem.software/CADverter_24.0/CAD_24.0_UI_WIN.01.msi
Theorem License Manager	https://s3-eu-west-1.amazonaws.com/theorem.software/LicenseManager/CAD_FLEXLM_11.17_WIN.01.msi



New Features / Enhancements

The following new features or enhancements have been introduced with this release

CATIA V5 to JT (CA5JT)

Ref ID	New Feature / Enhancement Description
1	CATIA V5 Read: Added support for CATIA V5-6R2021
2	JT Write: Integrated with JT Open Libraries version 10.8
3	FlexLM: Updated for Flex License Manager V11.17
4	JT Write: New option wr_sub_assy to write only JT assembly and sub assembly files as previous ASSEMBLY_ONLY behaviour has changed to write only top level assembly file between JTk releases

JT to CATIA V5 (JTCA5)

Ref ID	New Feature / Enhancement Description
1	CATIA V5 Write: Added support for CATIA V5-6R2021
2	JT Read: Integrated with JT Open Libraries version 10.8
3	FlexLM: Updated for Flex License Manager V11.17
4	JT Read: New Option to read reference planes read_ref_planes
5	JT Read: New option to not create additional root nodes no_root_nodes
6	CATIA V5 Write: Create CAD attribute property mapping file if one doesn't exist using cad_prop_map_file <file>

Known Limitations and Restrictions

The following limitations and restrictions have been identified prior to release

CATIA V5 to JT (CA5JT)

Ref ID	Limitations and Restrictions
--------	------------------------------

1	This release is not officially verified for Daimler suppliers due to Daimler rolling out JT V10.5. This installation still includes the previously certified tessDAIMLER.config file for creating Daimler specific data.
---	--

JT to CATIA V5 (JTCA5)

Ref ID	Limitations and Restrictions
--------	------------------------------

1	Output files with special characters are not supported for output CATIA V5 files
---	--

General

Ref ID	Limitations and Restrictions
--------	------------------------------

--	--



Resolved Support Calls

The following list of Support Calls are resolved with this release

Support Call ID	Brief Description
CAS-04169-X9K4Z5	Process using V22.1 hangs when translating to JT
CAS-04408-C5Z7K7	PLMXML structure not replicated correctly in V5 output
CAS-04420-T4Q9B5	JT data failed to process successfully
CAS-04421-P6V7B5	Create attribute file to enable users to filter and add attributes if file doesn't exist
CAS-04434-Y2J5D2	Parts not positioned correctly from PLMXML input
CAS-04441-J3S0V8	PLMXML structure not replicated correctly in V5 output
CAS-04448-L5B7X7	Change in ASSEMBLY_ONLY process
CAS-04461-M9V4L8	Large plane appearing in output
CAS-04465-M9R4B1	Attribute data is not written to CATIA V5 from PLMXML & JT