



---

## PRODUCT RELEASE ANNOUNCEMENT

---

Product Category	<b>TRANSLATE</b>
Product Group	CATIA V5 for JT
Product Release Version	23.0

Document Type	<b>Product Release Announcement</b>
Document Status	Released
Document Revision	2.0
Document Author	Product Manager
Document Issued	14/04/2020



## Contents

History .....	2
Product Codes .....	3
Supported Application Revisions.....	4
Supported Operating Systems.....	4
Installation Process Considerations.....	5
Distribution Media.....	5
New Features / Enhancements .....	6
CATIA V5 to JT (CA5JT).....	6
JT to CATIA V5 (JTCA5).....	6
Known Limitations and Restrictions .....	7
CATIA V5 to JT (CA5JT).....	7
JT to CATIA V5 (JTCA5).....	7
General .....	7
Resolved Support Calls .....	8



## History

Revision	Update Information
1.0	Initial document release for Version 23.0
2.0	Updated to describe limitation <a href="#">Ref ID 1</a> with V5-6R2020 Interactive Save As

Product Codes

<b>Product Code</b>	<b>Product Description</b>
<b>CA5JT-U1</b>	CATIA V5 (CAA Based) to JT (uni-directional)
<b>JTCA5-U1</b>	JT to CATIA V5 (CAA Based ) (uni-directional)
<b>CA5JT-A5</b>	CATIA V5 (CAA Based ) to JT (uni-directional) with PMI Add On
<b>CA5JT-A6</b>	CATIA V5 (CAA Based ) to JT (uni-directional) with Electrical Add On
<b>CA5JT-A7</b>	CATIA V5 (CAA Based ) to JT (uni-directional) with 3D PDF Add On
<b>JTCA5-A1</b>	JT to CATIA V5 (CAA Based ) (uni-directional) with 3DPDF Add On
<b>JTCA5-A2</b>	JT to CATIA V5 (CAA Based ) (uni-directional) with 3DXML Export Module
<b>CATJT-U1</b>	CATIA V4 to JT (uni-directional)
<b>CAGJT-U1</b>	Combined CATIA V4 & CATIA V5 to JT (uni-directional)
<b>CAGJT-U2</b>	Combined CATIA V4 & CATIA V5 to JT (uni-directional) with PMI Add On



## Supported Application Revisions

The following application revisions have been qualified with this release

Application	Revision
<b>CATIA V4</b>	All revisions
<b>CATIA V5</b>	CATIA V5-6R2017,CATIA V5-6R2018, CATIA V5-6R2019 & CATIA V5-6R2020
<b>JTOpen</b>	JTK 10.5

## Supported Operating Systems

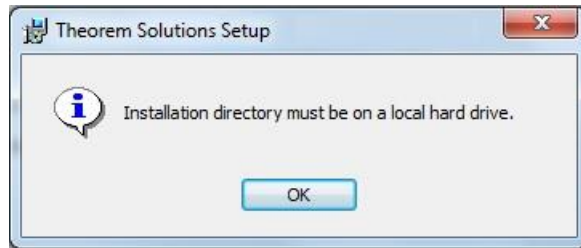
The following operating systems have been qualified with this release

Operating System	Qualification Status
<b>Window 10 64bit</b>	Qualified and fully supported for CATIA V4, CATIA V5-6R2017,CATIA V5-6R2018, CATIA V5-6R2019 & CATIA V5-6R2020
<b>Windows Server 2016</b>	Qualified and fully supported for CATIA V4, CATIA V5-6R2017,CATIA V5-6R2018, CATIA V5-6R2019 & CATIA V5-6R2020



## Installation Process Considerations

Starting with version 20.0 of Theorem Solutions applications changes have been made to the installation process. These changes have transitioned from a JAVA based installer package to a standard Microsoft Installer (.msi) package. A current limitation of the Microsoft msi method is that the software cannot be installed directly on to either externally mapped or network drives when installed from a client machine:



Therefore, the installation must be performed to a drive that is local to the machine itself.

If you are attempting to install the software onto a network drive, then please refer to the configuration guide available from the following link <http://www.theorem.com/documentation/Documentation/Client Configuration.pdf>.

## Distribution Media

CD images of the latest release are available from the following download site. The installation media for the bi-directional product is also the same media when installing a uni-directional variant.

Product Codes	Select link to download CD images
<b>All Product Codes for all supported versions of CATIA V5</b>	<a href="https://s3-eu-west-1.amazonaws.com/theorem.software/CADverter_23.0/CAD_23.0_CA5JT_WIN.01.msi">https://s3-eu-west-1.amazonaws.com/theorem.software/CADverter_23.0/CAD_23.0_CA5JT_WIN.01.msi</a>
<b>Theorem User Interface</b>	<a href="https://s3-eu-west-1.amazonaws.com/theorem.software/CADverter_23.0/CAD_23.0_UI_WIN.01.msi">https://s3-eu-west-1.amazonaws.com/theorem.software/CADverter_23.0/CAD_23.0_UI_WIN.01.msi</a>
<b>Theorem License Manager</b>	<a href="https://s3-eu-west-1.amazonaws.com/theorem.software/LicenseManager/CAD_FLEXLM_11.14_WIN.01.msi">https://s3-eu-west-1.amazonaws.com/theorem.software/LicenseManager/CAD_FLEXLM_11.14_WIN.01.msi</a>



## New Features / Enhancements

The following new features or enhancements have been introduced with this release

### CATIA V5 to JT (CA5JT)

Ref ID	New Feature / Enhancement Description
1	DAIMLER Compliance: V23.0 is certified as DAIMLER Supplier compliant.
2	Theorem-XR: Interactive CAD upload from CATIA V5 to Theorem Visualization Pipeline
3	CATIA V5 Read: Added support for CATIA V5-6R2020.
4	JT Write: Integrated with JT Open Libraries version 10.5
5	CATIA V5 Read: Improvements in read performance of large CATPart files
6	CATIA V5 Read: Improvements in CGR colour processing
7	CATIA V5 Read: Improvements in stroked PMI fonting and positioning
8	JT Write: Support for PMI associated to wireframe geometry
9	JT Write: Improvements to memory use

### JT to CATIA V5 (JTCA5)

Ref ID	New Feature / Enhancement Description
1	CATIA V5 Write: Added support for CATIA V5-6R2020.
2	JT Read: Integrated with JT Open Libraries version 10.5
3	JT Read: Improvements to memory use




## Known Limitations and Restrictions

The following limitations and restrictions have been identified during final testing prior to release

CATIA V5 to JT (CA5JT)

Ref ID	Limitations and Restrictions
--------	------------------------------

1	<p>When using the <b>File &gt; Save As</b> functionality to create a JT file from within CATIA V5-6R2020 (R30) the process will show the following message</p>  <p>To resolve this issue, download and extract the zip file below.</p> <p><a href="https://s3-eu-west-1.amazonaws.com/theorem.software/customer_update/CAD_23.0_CA5JT_WI_N.01_Overlay.zip">https://s3-eu-west-1.amazonaws.com/theorem.software/customer_update/CAD_23.0_CA5JT_WI_N.01_Overlay.zip</a></p> <p>Copy the .dll file into the directory (assuming the default installation location):</p> <p><b><i>C:\Program Files\Theorem\23.0\B30\win_b64\code\bin</i></b></p>
---	---

JT to CATIA V5 (JTCA5)

Ref ID	Limitations and Restrictions
--------	------------------------------

--	--

General

Ref ID	Limitations and Restrictions
--------	------------------------------

--	--



## Resolved Support Calls

The following list of Support Calls are resolved with this release

<b>Support Call ID</b>	<b>Brief Description</b>
<b>CAS-04023-S2H4M5</b>	Improvement to character processing when using CATIA V5 instance naming.
<b>CAS-04042-X5P4T6</b>	Processing of error message “Error: whilst reading children” has been improved to remove false messages.
<b>CAS-04204-T6X4H1</b>	Mass property attributes differing from V20.2 & V22.1