



---

## PRODUCT RELEASE ANNOUNCEMENT

---

Product Category	Visualize 3D
Product Group	CATIA V5 (Independent) for JT
Release Version	26.0

Document Type	Product Release Announcement
Status	Released
Revision	1 .0
Author	Product Manager
Issued	04/09/23



## Contents

History .....	2
Product Codes .....	2
Supported Application Revisions .....	2
Supporting API's .....	2
Supported Operating Systems .....	3
Distribution Media .....	4
New Features / Enhancements .....	5
Known Limitations and Restrictions.....	5
Resolved Support Calls.....	5



## History

Revision	Update Information
1.0	Initial Release

## Product Codes

Product Code	Product Description
C5IJT-U1	Catia V5 Independent > JT Unidirectional Base Product
JTC5I-U1	JT > Catia V5 Independent Unidirectional Base Product
C5IJT-B1	Catia V5 Independent <> JT Bidirectional Base Product
C5IJT-A1	Catia V5 Independent > JT Unidirectional Add-on module for PMI

## Supported Application Revisions

The following application revisions have been qualified with this release

Application	Revision
CATIA V5	All CATIA V5 file revisions from CATIA V5 R15 up to CATIA V5 R33. Note! This translator product does NOT require a CATIA V5 installation

## Supporting API's

The following supporting API support is used

Library	Revision
JTOpen Libraries	JTK version 11.3
JT File Format	JT file format 8.0 to 10.8
CATIA V5 CGM Interface	CGM_2023.1.0.0hf13

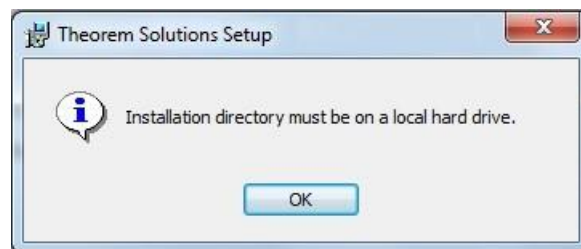
## Supported Operating Systems

The following operating systems have been qualified with this release

Operating System	Qualification Status
Window 10 64bit	Qualified and fully supported

## Installation Process Considerations

Starting with version 20.0 of Theorem Solutions applications changes have been made to the installation process. These changes have transitioned from a JAVA based installer package to a standard Microsoft Installer (.msi) package. A current limitation of the Microsoft msi method is that the software cannot be installed directly on to either externally mapped or network drives when installed from a client machine:



Therefore, the installation must be performed to a drive that is local to the machine itself.

If you are attempting to install the software onto a network drive, then please refer to the configuration guide available from the following link

[http://www.theorem.com/documentation/Documentation/Client\\_Configuration.pdf](http://www.theorem.com/documentation/Documentation/Client_Configuration.pdf)

## Distribution Media

CD images of the latest release are available from the following download sites.

Product	URL for CD image download
All C5IJT Products	<a href="https://s3.eu-west-1.amazonaws.com/theorem.software/CADverter_26.0/CAD_26.0_C5IJT_WIN.01.msi">https://s3.eu-west-1.amazonaws.com/theorem.software/CADverter_26.0/CAD_26.0_C5IJT_WIN.01.msi</a>

## Related Distribution Media

In addition to the translator software itself there are also two other related media distributions available. One is for the installation and configuration of the Theorem User Interface. This is designed as a free-standing user interface for the translator allowing the user to navigate the file system and initiate translations either interactively or in batch using standard drag and drop techniques. The second media distribution contains the Theorem License Manager which is installed on the nominated license server(s) and manages the user access to the purchased volume of concurrent Theorem application licenses.

Related Package	URL for CD image download
Theorem User Interface	<a href="https://s3.eu-west-1.amazonaws.com/theorem.software/CADverter_26.0/CAD_26.0_UI_WIN.03.msi">https://s3.eu-west-1.amazonaws.com/theorem.software/CADverter_26.0/CAD_26.0_UI_WIN.03.msi</a>
Theorem License Manager	<a href="https://s3.eu-west-1.amazonaws.com/theorem.software/LicenseManager/CAD_FLEXLM_11.19_WIN.01.msi">https://s3.eu-west-1.amazonaws.com/theorem.software/LicenseManager/CAD_FLEXLM_11.19_WIN.01.msi</a>



## New Features / Enhancements

The following new features or enhancements have been introduced with this release

Ref ID	New Feature / Enhancement Description
--------	---------------------------------------

1	Support for CATIA V5-6R2023 (R33) is now available for both reading and writing CATIA V5 data using the respective translators.
---	---

## Known Limitations and Restrictions

## Resolved Support Calls