



---

## PRODUCT RELEASE ANNOUNCEMENT

---

Product Category	Visualize 3D
Product Group	CATIA V5 (Independent) for JT
Release Version	23.1

Document Type	Product Release Announcement
Status	Released
Revision	2.0
Author	Lewis Davison
Issued	26/11/2020



## Contents

History .....	2
Product Codes .....	3
Supported Application Revisions .....	4
Supporting API's .....	4
Supported Operating Systems .....	4
Distribution Media .....	5
New Features / Enhancements .....	7
Known Limitations and Restrictions.....	8
Resolved Support Calls .....	9



## History

Revision	Update Information
1.0	Initial Release
2.0	Updated to add fix for running translator in different locales

## Product Codes

<b>Product Code</b>	<b>Product Description</b>
<b>C5IJT-U1</b>	Catia V5 Independent > JT Unidirectional Base Product
<b>JTC5I-U1</b>	JT > Catia V5 Independent Unidirectional Base Product
<b>C5IJT-B1</b>	Catia V5 Independent <> JT Bidirectional Base Product
<b>C5IJT-A1</b>	Catia V5 Independent > JT Unidirectional Add-on module for PMI

## PRODUCT RELEASE ANNOUNCEMENT

### Supported Application Revisions

The following application revisions have been qualified with this release

Application	Revision
<b>CATIA V5</b>	All CATIA V5 file revisions from CATIA V5 R15 up to CATIA V56R2019. Note! This translator product does NOT require a CATIA V5 installation

### Supporting API's

The following supporting API support is used

Library	Revision
<b>JTOpen Libraries</b>	JTK version 10.5
<b>JT File Format</b>	JT file format 8.0 to 10.3
<b>CATIA V5 CGM Interface</b>	Spatial 2020 1.0.1

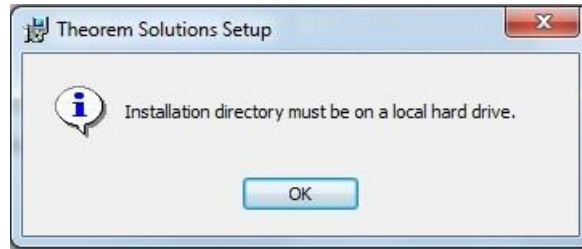
### Supported Operating Systems

The following operating systems have been qualified with this release

Operating System	Qualification Status
<b>Window 10 64bit</b>	Qualified and fully supported

### Installation Process Considerations

Starting with version 20.0 of Theorem Solutions applications changes have been made to the installation process. These changes have transitioned from a JAVA based installer package to a standard Microsoft Installer (.msi) package. A current limitation of the Microsoft msi method is that the software cannot be installed directly on to either externally mapped or network drives when installed from a client machine:



Therefore, the installation must be performed to a drive that is local to the machine itself.

If you are attempting to install the software onto a network drive, then please refer to the configuration guide available from the following link

[http://www.theorem.com/documentation/Documentation/Client\\_Configuration.pdf](http://www.theorem.com/documentation/Documentation/Client_Configuration.pdf)

## Distribution Media

CD images of the latest release are available from the following download sites.

Product	URL for CD image download
All C5IJT Products	<a href="https://s3-eu-west-1.amazonaws.com/theorem.software/CADverter_23.1/CAD_23.1_C5IJT_WIN.02.msi">https://s3-eu-west-1.amazonaws.com/theorem.software/CADverter_23.1/CAD_23.1_C5IJT_WIN.02.msi</a>

## Related Distribution Media

In addition to the translator software itself there are also two other related media distributions available. One is for the installation and configuration of the Theorem User Interface. This is designed as a free-standing user interface for the translator allowing the user to navigate the file system and initiate translations either interactively or in batch using standard drag and drop techniques. The second media distribution contains the Theorem License Manager which is installed on the nominated license server(s) and manages the user access to the purchased volume of concurrent Theorem application licenses.

Related Package	URL for CD image download
Theorem User Interface	<a href="https://s3-eu-west-1.amazonaws.com/theorem.software/CADverter_23.1/CAD_23.1_UI_WIN.01.msi">https://s3-eu-west-1.amazonaws.com/theorem.software/CADverter_23.1/CAD_23.1_UI_WIN.01.msi</a>



## PRODUCT RELEASE ANNOUNCEMENT

---

<b>Theorem License Manager</b>	<a href="https://s3-eu-west-1.amazonaws.com/theorem.software/LicenseManager/CAD_FLEXLM_11.14_WIN.01.msi">https://s3-eu-west-1.amazonaws.com/theorem.software/LicenseManager/CAD_FLEXLM_11.14_WIN.01.msi</a>
--	---

## PRODUCT RELEASE ANNOUNCEMENT

---

### New Features / Enhancements

The following new features or enhancements have been introduced with this release

**Ref ID      New Feature / Enhancement Description**

<b>1</b>	Support for CATIA V5-6R2019 (R29) is now available for both reading and writing CATIA V5 data using the respective translators.
<b>2</b>	Viewer files updated to binary fixing the issue with translations not working on German locale machines.



## PRODUCT RELEASE ANNOUNCEMENT

---

### Known Limitations and Restrictions

The following limitations and restrictions have been identified during final testing prior to release

Ref ID	Limitations and Restrictions
1	<i>When process JT assembly data and writing the output in CGR format a single CGR file is created. The CGR maintains the complete assembly positions and all of the geometry. However, this doesn't expose the JT assembly structure to the CATIA V5 users</i>
2	<i>Note, for any existing customers using older versions of the FLEXlm license manager, it is necessary to update the license server installation to use the latest 11.14 release. See the link to download the latest version of the license manager in the section labelled "Related Distribution Media"</i>

## Resolved Support Calls

The following list of Support Calls are resolved with this release

<b>Support</b>	<b>Brief Description</b>	<b>Call ID</b>
<b>CAS-03974</b>	<b>Missing elements in JT file</b>	
<b>CAS-04209</b>	<b>Parts in wrong position</b>	