



PRODUCT RELEASE ANNOUNCEMENT

Product Category	Multi-CAD
Product Group	CATIA V5 Multi-CAD <> NX
Release Version	20.2

Document Type	Product Release Announcement
Status	Released
Revision	2.0
Author	Martin Wright
Issued	15/12/2017



Contents

Document History.....	2
Product Codes	3
Supported Application Revisions.....	4
Supporting API's	4
Supported Operating Systems.....	4
Installation Process Considerations.....	6
Distribution Media.....	6
CATIA V5 Media Installation Sequence	7
Related Distribution Media	7
New Features / Enhancements	9
Multi-CAD CATIA V5 to NX (MC5NX)	9
NX to Multi-CAD CATIA V5 (NXMC5)	9
Known Limitations and Restrictions.....	10
Multi-CAD CATIA V5 to NX (MC5NX)	10
NX to Multi-CAD CATIA V5 (NXMC5)	10
Resolved Support Calls	11



Document History

Revision	Update Information
1.0	Initial Release.
2.0	Updated references to media download to reflect packaging updates



Product Codes

Product Code	Product Description	
MC5NX-B1	Base Product	CATIA V5 (Multi-CAD) to/from NX (bi-directional)
MC5NX-U1	Base Product	CATIA V5 (Multi-CAD) to NX (uni-directional)
MC5NX-A1	Optional add-on	CATIA V5 (Multi-CAD) to NX (Bi-directional) Model Based Definition (3D Dimensions & Annotations)
MC5NX-A2	Optional add-on	CATIA V5 (Multi-CAD) to NX (uni-directional) Model Based Definition (3D Dimensions & Annotations)
NXMC5-U1	Base Product	NX to CATIA V5 (Multi-CAD) (uni-directional) Model Based Definition (3D Dimensions & Annotations)
NXMC5-A1	Optional add-on	NX (Bi-directional) to CATIA V5 (Multi-CAD) Model Based Definition (3D Dimensions & Annotations)
NXMC5-I1	Optional add-on	NX to CATIA V5 (Multi-CAD) (uni-directional) Interactive.



Supported Application Revisions

The following application revisions have been qualified with this release

Application	Revision
CATIA V5	CATIA V5-6R2014 (SP4 minimum recommended) CATIA V5-6R2015 CATIA V5-6R2016 CATIA V5-6R2017
NX	9.0 10.0 11.0

Supporting API's

The following supporting API support is used

Application	Revision
Dassault Multi-CAD (XCAD)	CATIA V5-6R2014 CATIA V5-6R2015 CATIA V5-6R2016 CATIA V5-6R2017
Siemens NX	NX9.0 (version 9.0.1.3 or above) NX10.0 NX11.0

Supported Operating Systems

The following operating systems have been qualified with this release

Operating System	Qualification Status
Windows 7 64bit	Qualified and fully supported
Window 8 64bit	Qualified and fully supported for, CATIA V5-6R2014 CATIA V5-6R2015 CATIA V5-6R2016, and CATIA V5-6R2017
Windows Server 2008 R2	Qualified and fully supported for, CATIA V5-6R2014 CATIA V5-6R2015 CATIA V5-6R2016, and CATIA V5-6R2017



PRODUCT RELEASE ANNOUNCEMENT

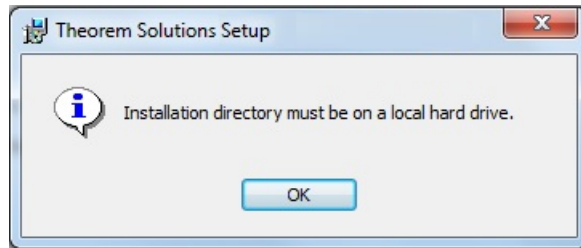


Windows Server 2012	Qualified and fully supported for CATIA V5-6R2014 CATIA V5-6R2015 and CATIA V5-6R2016 only
----------------------------	--



Installation Process Considerations

Starting with version 20.0 of Theorem Solutions applications changes have been made to the installation process. These changes have transitioned from a JAVA based installer package to a standard Microsoft Installer (.msi) package. A current limitation of the Microsoft msi method is that the software cannot be installed directly on to either externally mapped or network drives when installed from a client machine:



Therefore, the installation must be performed to a drive that is local to the machine itself.

If you are attempting to install the software onto a network drive, then please refer to the configuration guide available from the following link
http://www.theorem.com/documentation/Documentation/Client_Configuration.pdf.

Distribution Media

CD images of the latest release are available from the following download site. The installation media for the bi-directional product is also the same media when installing a uni-directional variant.

Product Code URL for CD image download

Multi-CAD CATIA V5-6 – NX for all supported CATIA V5 releases	Download CAD 20.2 MC5NX WIN.02 Release
Generic Theorem User Interface	Download CAD 20.2 UI WIN.02 Release

Note, the necessary software required for any of the specific add-on modules will be automatically installed with any of the base level installations. Therefore, it is not necessary to change the installation even if an additional add-on module license is purchased at a later date to the original installation.

In addition to the translator application itself there is also a mandatory requirement to install the prerequisite Theorem TXX Multi-CAD platform media into the CATIA V5 installation as part of the installation procedure. The TXX Multi-CAD platform media is related to each of the specific releases of CATIA V5 that is being used.



Prerequisite TXX Installation	URL for CD image download
CATIA V5-6R2014	https://s3-eu-west-1.amazonaws.com/theorem.software/CADverter_TXX_Media/V5-6R2015.THEOREM.win_b64.zip
CATIA V5-6R2015	https://s3-eu-west-1.amazonaws.com/theorem.software/CADverter_TXX_Media/V5-6R2015.THEOREM.win_b64.zip
CATIA V5-6R2016	https://s3-eu-west-1.amazonaws.com/theorem.software/CADverter_TXX_Media/V5-6R2016.THEOREM.win_b64.zip
CATIA V5-6R2017	https://s3-eu-west-1.amazonaws.com/theorem.software/CADverter_TXX_Media/V5-6R2017.THEOREM.win_b64.zip

CATIA V5 Media Installation Sequence

The installation of a CATIA V5 Multi-CAD based product must follow a specific installation sequence to ensure that the combination of base products and software updates provided by both Theorem Solutions and Dassault Systems are configured correctly. This includes the base level CATIA V5 installation, the Theorem TXX Multi-CAD platform, the CATIA V5 Service Pack and Hotfix level. Unless the installation sequence is strictly followed there is a potential risk that the CATIA V5 installation will not be configured correctly.

Therefore, the following CATIA application installation sequence MUST be strictly followed to ensure that the correct configuration and updates are available;

1. Install the base GA release of the required version of CATIA V5-6
2. Install the Theorem TXX platform media associated with the required version of CATIA V5-6
3. Install the required CATIA V5-6 Service Pack release
4. Install the required CATIA V5-6 Hotfix release

Note, the installation of the Theorem Multi-CAD translator can be undertaken at any point during this sequence.

Related Distribution Media

In addition to the translator software itself there are also two other related media distributions available. One is for the installation and configuration of the Theorem User Interface. This is designed as a free-standing user interface for the translator allowing the user to navigate the file system and initiate translations either interactively or in batch using



PRODUCT RELEASE ANNOUNCEMENT



standard drag and drop techniques. The second media distribution contains the Theorem License Manager which is installed on the nominated license server(s) and manages the user access to the purchased volume of concurrent Theorem application licenses.

Product Code	URL for CD image download
Theorem User Interface	https://s3-eu-west-1.amazonaws.com/theorem.software/CADverter_20.2/CAD_20.2_UI_WIN.03.msi
Theorem License Manager	https://s3-eu-west-1.amazonaws.com/theorem.software/LicenseManager/CAD_FLEXLM_11.14_WIN.01.msi



New Features / Enhancements

The following new features or enhancements have been introduced with this release

Multi-CAD CATIA V5 to NX (MC5NX)

Ref ID	New Feature / Enhancement Description
1	Support for CATIA V5-6R2017 has been implemented with this release
3	The Theorem User Interface is supported for both interactive and batch processing of translations external to the CATIA V5 application

NX to Multi-CAD CATIA V5 (NXMC5)

Ref ID	New Feature / Enhancement Description
1	Support for CATIA V5-6R2017 has been implemented with this release
3	The Theorem User Interface is supported for both interactive and batch processing of translations external to the CATIA V5 application
4	When axis systems are created in the V5 data they are created as hidden data by default. The user can control the visible creation state by the Theorem menu within CATIA.



Known Limitations and Restrictions

The following limitations and restrictions have been identified during final testing prior to release

Multi-CAD CATIA V5 to NX (MC5NX)

Ref ID Limitations and Restrictions

1	Not supported when running interactively from within Catia5. Supported in UI
2	The Theorem FLEXIm license manager for this release should be updated to the latest release available. See section on “Related Distribution Media”

NX to Multi-CAD CATIA V5 (NXMC5)

Ref ID Limitations and Restrictions

1	Supported as “open existing component” only, when running Interactively in Catia5 Supported in UI
2	The Theorem FLEXIm license manager for this release should be updated to the latest release available. See section on “Related Distribution Media”



Resolved Support Calls

The following list of Support Calls are resolved with this release

Support Call ID	Brief Description
------------------------	--------------------------
