



PRODUCT RELEASE ANNOUNCEMENT

Product Category	CADverter
Product Group	CREO for CATIA V5 Multi-CAD
Release Versions	22.1

Document Type	Product Release Announcement
Status	Released
Revision	1.0
Author	Product Manager
Issued	04/06/2019



Contents

History	2
Product Codes	3
Supported Application Revisions	4
Supporting API's	4
Supported Operating Systems	4
Installation Process Considerations	5
Distribution Media	5
New Features / Enhancements	7
Known Limitations and Restrictions	8
Resolved Support Calls	9



History

Revision	Update Information
1.0	Initial Release

Product Codes

Product Code	Product Type	Product Description
MC5CRE-B1	Base Product	CATIA V5 (Multi-CAD) to/from CREO (bi-directional)
MC5CRE-A1	Optional add-on	CATIA V5 (Multi-CAD) to CREO (Bi-directional) Model Based Definition (3D Dimensions & Annotations)
MC5CRE-U1	Base Product	CATIA V5 (Multi-CAD) to CREO (uni-directional)
MC5CRE-A2	Optional add-on	CATIA V5 (Multi-CAD) to CREO (uni-directional) Model Based Definition (3D Dimensions & Annotations)
CREMC5-U1	Base Product	CREO to CATIA V5 (Multi-CAD) (uni-directional) Model Based Definition (3D Dimensions & Annotations)
CREMC5-A1	Optional add-on	CREO (Bi-directional) to CATIA V5 (Multi-CAD) Model Based Definition (3D Dimensions & Annotations)



Supported Application Revisions

The following application revisions have been qualified with this release

Application	Revision
CATIA V5	CATIA V5-6R2016 CATIA V5-6R2017 CATIA V5-6R2018 CATIA V5-6R2019
CREO	CREO Parametric 3.0 CREO Parametric 4.0 CREO Parametric 5.0

Supporting API's

The following supporting API support is used

Application	Revision
Dassault Multi-CAD (XCAD)	CATIA V5-6R2016 CATIA V5-6R2017 CATIA V5-6R2018 CATIA V5-6R2019

Supported Operating Systems

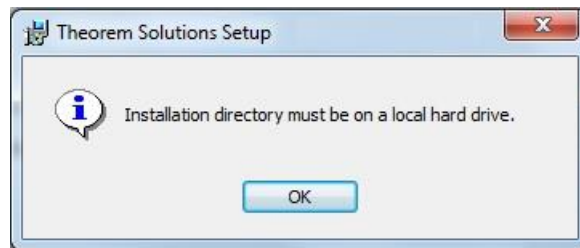
The following operating systems have been qualified with this release

Operating System	Qualification Status
Window 8.1 64bit	CATIA: <ul style="list-style-type: none"> Qualified and fully supported for V5-6R2016, V5-6R2017, V5-6R2018, V5-6R2019 Creo: Qualified and fully supported for 3.0, 4.0, 5.0
Windows 10	CATIA: <ul style="list-style-type: none"> Qualified and fully supported for V5-6R2016, V5-6R2017, V5-6R2018, V5-6R2019 Creo: Qualified and fully supported for 3.0, 4.0, 5.0



Installation Process Considerations

Starting with version 20.0 of Theorem Solutions applications changes have been made to the installation process. These changes have transitioned from a JAVA based installer package to a standard Microsoft Installer (.msi) package. A current limitation of the Microsoft msi method is that the software cannot be installed directly on to either externally mapped or network drives when installed from a client machine:



Therefore, the installation must be performed to a drive that is local to the machine itself.

If you are attempting to install the software onto a network drive, then please refer to the configuration guide available from the following link
http://www.theorem.com/documentation/Documentation/Client_Configuration.pdf.

Distribution Media

CD images of the latest release are available from the following download site. The installation media for the bi-directional product is also the same media when installing a uni-directional variant.

Note! For each CATIA V5 release the CATIA V5 Multi-CAD software requires the relevant Dassault Systems TXX media to be downloaded and installed prior to installing the Theorem Multi-CAD Product Software. Please see the Software Installation guide for further details.

Product	URL for CD image download
Installation Media	CAD 22.1 MC5CRE WIN.01.msi
Unified Interface	CAD 22.1 UI WIN.01.msi
License Server	CAD FLEXLM 11.14 WIN.01.msi



PRODUCT RELEASE ANNOUNCEMENT



Prerequisite TXX Installation	Select hyperlink to download installation CD
CATIA V5-6R2016	V5-6R2016.THEOREM.win_b64.zip
CATIA V5-6R2017	V5-6R2017.THEOREM.win_b64.zip
CATIA V5-6R2018	V5-6R2018.THEOREM.win_b64.zip
CATIA V5-6R2019	V5-6R2019.THEOREM.win_b64.zip



New Features / Enhancements

The following new features or enhancements have been introduced with this release

Product Impacted	New Feature / Enhancement Description
MC5-CRE	Support for Catia V5R2018 and V5R2019
MC5CRE	Support for PTC Creo Parametric 5.0
CREO to CATIA V5-6	Running the CREO to V5 translator via the Theorem UI: Previously there was a restriction which meant that both the creation of VISU & VISUSNAP output format data was not supported when using the Theorem UI. This restriction has now been removed and all formats are now supported from the UI.



Known Limitations and Restrictions

The following limitations and restrictions have been identified during final testing prior to release

Ref ID	Limitations and Restrictions
--------	------------------------------

1	<i>Some limitations when processing Model Views with PMI from CREO to V5</i>
2	<i>CREO to V5 translator via CATIA "Insert Existing": Visu and VisuSnap only process assemblies. If translating a part file, an empty CGR file is created.</i>



Resolved Support Calls

The following list of Support Calls are resolved with this release

Support Call ID#	Product Impacted	Description
-----------------------------	-----------------------------	--------------------

