



PRODUCT RELEASE STATUS

Product Category	Publish 3D
Product Group	JT > 3DPDF
Release Version	21.1

Document Type	Product Release Announcement
Status	Released
Revision	1.0
Author	Matt Bennett
Issued	16/07/2018



Contents

History	2
Product Codes	3
QA Configuration	3
Links to 3 rd Party Sites.....	3
Supported Application Revisions.....	4
Supporting API's	4
Supported Operating Systems.....	4
Installation Process Considerations.....	5
Distribution Media.....	5
New Features / Enhancements	6
JT to 3DPDF.....	6
Known Limitations and Restrictions.....	7
JT to 3DPDF.....	7
Resolved Support Calls	8
JT > 3DPDF	8



History

Revision	Update Information
1.0	Initial Release.

Product Codes

Product Code	Product Description
JTPDF-U1	JT > 3D PDF On Demand (uni)

QA Configuration

The following software configuration was used by QA for certification against

CAD version	Theorem CADverter	OS platform
JT	21.1.001	Windows 7 / Windows 10

Links to 3rd Party Sites

The following is a link to the CADX documentation pages which provide additional useful material pertinent to this product

N/A



Supported Application Revisions

The following application revisions have been qualified with this release

Application	Revision
JTOpen	Jtk9.0
Adobe Reader	Adobe Reader 7.0 and above

Supporting API's

The following supporting API versions are used

Application	Revision
JTOpen	Jtk9.0
3D PDF	HOOPS Exchange Publish 2018

Supported Operating Systems

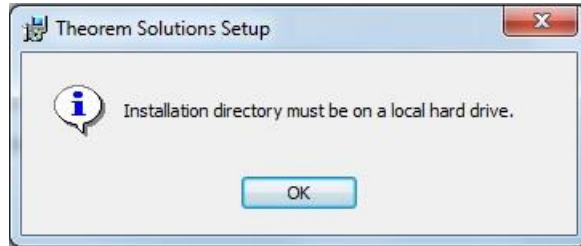
The following operating systems have been qualified with this release

Operating System	Qualification Status
Windows 7 64bit	Qualified and fully supported (All Revisions)
Windows 10 64bit	Qualified and fully supported (All Revisions)



Installation Process Considerations

Starting with version 20.0 of Theorem Solutions applications changes have been made to the installation process. These changes have transitioned from a JAVA based installer package to a standard Microsoft Installer (.msi) package. A current limitation of the Microsoft msi method is that the software cannot be installed directly on to either externally mapped or network drives when installed from a client machine:



Therefore, the installation must be performed to a drive that is local to the machine itself.

If you are attempting to install the software onto a network drive, then please refer to the configuration guide available from the following link
http://www.theorem.com/documentation/Documentation/Client_Configuration.pdf.

Distribution Media

CD images of the latest release are available from the following download sites.

Software	Required for	URL for CD image download
Installation Media	On-Demand	CAD 21.1 JTPDF WIN.01
Unified Interface	On-Demand	CAD 21.1 UI WIN.01
License Server	On-Demand	CAD FLEXLM 11.14 WIN.01



New Features / Enhancements

The following new features or enhancements have been introduced with this release

JT to 3DPDF

Ref ID	New Feature / Enhancement Description
1	<i>API Libraries:</i> Use of new HOOPS Exchange Publish 2018 libraries
2	<i>Widget Output:</i> Fix for carousel widget output, the 2D images now match the 3D images wireframe
3	<i>HTML5 Output:</i> The HTML5 output will now default with a footer similar to the STD PDF template
4	<i>Assembly Processing:</i> When processing assemblies there is a new option process_parts which creates individual PRC output components for each part
5	<i>New Option:</i> Option part_snap_shot added with the arguments of either on or Width x Height (WWxHH) values create a .jpg image for part/assembly
6	<i>BOM Table Improvement:</i> Changes to BOM table to support column_data_source with 'part_image' and 'image_file'
7	<i>BOM Table Improvement:</i> Option ts_bind_bom_table_image_<column number> and ts_bind_bom_table_text_<column number> added as a bound fields to BOM table
8	<i>BOM Table Improvement:</i> Improved CSS support for active BOM tables - where highlight_part=yes setting is applied
9	<i>Template Improvement:</i> Text fields in templates added checks for extended ascii and convert to utf8
10	<i>New Option:</i> Option expand_parts added to create a node per point using the TAG name
11	<i>New Option:</i> By default, the PDF output will be automatically optimized to make the PDF file smaller. To disable this feature there is an option optimize_save off provided.
12	<i>New Option:</i> Option image_dir <folder name> added to import images into a template
13	<i>Image Support:</i> Ability to insert images into tables from external files supported
14	<i>Configuration Update:</i> The document Author/Title & Subject fields can now be set using a Configuration setting. This will overwrite any values that have been predefined in the associated template file



Known Limitations and Restrictions

The following limitations and restrictions have been identified during final testing prior to release

JT to 3DPDF

Ref ID Limitations and Restrictions

1	A current limitation of the .msi installation method is that the software cannot be installed directly on to external based mapped or network drives from a client machine. For guidance on how to do this, please find the documentation here
2	PMI Flipping: PDF does not support flipped PMI
3	PMI to PMI Annotations: PDF does not support linked PMI
4	PDF Default View: If a default view is set along and any render mode other than Solid is configured then the render mode will not be honoured.



Resolved Support Calls

The following list of Support Calls are resolved with this release

JT > 3DPDF

Support Call ID	Brief Description
CAS-03354-C2R9L9	Process error when JT file published with read_pmi option.

