



---

## PRODUCT RELEASE ANNOUNCEMENT

---

Product Category	<b>Publish 3D</b>
Product Group	CATIA V5 for 3D PDF
Release Version	22.0

Document Type	<b>Product Release Announcement</b>
Status	Released
Revision	3.0
Author	Product Manager
Issued	19/02/2019



## Contents

History .....	2
Product Codes .....	3
Supported Application Revisions.....	4
Supporting API's .....	4
Supported Operating Systems.....	4
Installation Process Considerations.....	5
Distribution Media.....	5
Related Distribution Media .....	5
New Features / Enhancements .....	7
Known Limitations and Restrictions.....	8
Resolved Support Calls .....	9



## History

Revision	Update Information
1.0	Initial Release
2.0	Document formatting corrections
3.0	Updated link to 22.0 release of Theorem User Interface

## Product Codes

<b>Product Code</b>	<b>Product Description</b>
<b>CA5PDF-U1</b>	CATIA V5 Publish 3D On Demand Interactive & Batch processing
<b>CA5PDF-I1</b>	CATIA V5 Publish 3D Interactive
<b>CA5PDF-A1</b>	Publish 3D Configuration Tool for CATIA users
<b>CA5PDF-S1</b>	Publish 3D consultancy services add-on module to support export of CATIA V5 Motion data to PDF

## Supported Application Revisions

The following application revisions have been qualified with this release

Application	Revision
<b>CATIA V5</b>	CATIA V5-6R2015, CATIA V5-6R2016, CATIA V5-6R2017, CATIA V5-6R2018
<b>Adobe Reader</b>	Adobe Reader XI

## Supporting API's

The following supporting API support is used

Application	Revision
<b>3D PDF API</b>	HOOPS Exchange Publish 2018 SP2 U2

## Supported Operating Systems

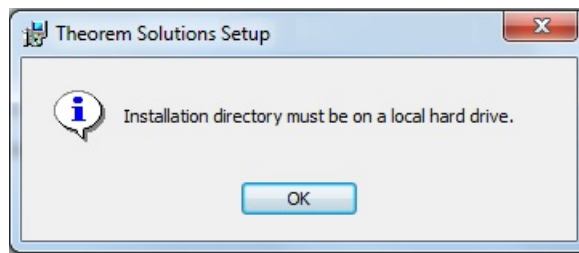
The following operating systems have been qualified with this release

Operating System	Qualification Status
<b>Windows 7 64bit</b>	Qualified and fully supported (All CATIA V5 Revisions)
<b>Window 8.1 64bit</b>	Qualified and fully supported for CATIA V5-6R2015
<b>Windows 10 64bit</b>	Qualified and fully supported for CATIA V5-6R2016, CATIA V5-6R2017 & CATIA V5-6R2018
<b>Windows Server 2008 R2</b>	Qualified and fully supported for CATIA V5-6R2014, CATIA V5-6R2015, CATIA V5-6R2016, CATIA V5-6R2017 & CATIA V5-6R2018
<b>Windows Server 2012</b>	Qualified and fully supported for CATIA V5-6R2014, CATIA V5-6R2015, CATIA V5-6R2016, CATIA V5-6R2017 & CATIA V5-6R2018



## Installation Process Considerations

Starting with version 20.0 of Theorem Solutions applications changes have been made to the installation process. These changes have transitioned from a JAVA based installer package to a standard Microsoft Installer (.msi) package. A current limitation of the Microsoft msi method is that the software cannot be installed directly on to either externally mapped or network drives when installed from a client machine:



Therefore, the installation must be performed to a drive that is local to the machine itself.

If you are attempting to install the software onto a network drive, then please refer to the configuration guide available from the following link  
[http://www.theorem.com/documentation/Documentation/Client\\_Configuration.pdf](http://www.theorem.com/documentation/Documentation/Client_Configuration.pdf).

## Distribution Media

CD images of the latest release are available from the following download sites.

CATIA V5 Version	URL for CD image download
<b>ALL products for all versions of CATIA V5-6</b>	<a href="https://s3-eu-west-1.amazonaws.com/theorem.software/CADverter_22.0/CAD_22.0_CA5PDF_WIN.01.msi">https://s3-eu-west-1.amazonaws.com/theorem.software/CADverter_22.0/CAD_22.0_CA5PDF_WIN.01.msi</a>

## Related Distribution Media

In addition to the translator software itself there are also two other related media distributions available. One is for the installation and configuration of the Theorem User Interface. This is designed as a free-standing user interface for the translator allowing the user to navigate the file system and initiate translations either interactively or in batch using standard drag and drop techniques. The second media distribution contains the Theorem License Manager which is installed on the nominated license server(s) and manages the user access to the purchased volume of concurrent Theorem application licenses.



# PRODUCT RELEASE ANNOUNCEMENT

---



Related Package	URL for CD image download
<b>Theorem User Interface</b>	<a href="https://s3-eu-west-1.amazonaws.com/theorem.software/CADverter_22.0/CAD_22.0_UI_WIN.01.msi">https://s3-eu-west-1.amazonaws.com/theorem.software/CADverter_22.0/CAD_22.0_UI_WIN.01.msi</a>
<b>Theorem License Manager</b>	<a href="https://s3-eu-west-1.amazonaws.com/theorem.software/LicenseManager/CAD_FLEXLM_11.14_WIN.01.msi">https://s3-eu-west-1.amazonaws.com/theorem.software/LicenseManager/CAD_FLEXLM_11.14_WIN.01.msi</a>



## New Features / Enhancements

The following new features or enhancements have been introduced with this release

**Ref ID    New Feature / Enhancement Description**

1	A wireframe graphical representation of CATIA V5 Axis Systems are able to be exported into the PDF output using the <b>axis_systems on</b> advanced option.
2	The latest release of the Adobe APIs enables the user to control the initial render mode of the 3D view
3	File attachments can now be achieved using filenames derived from the currently processed filename. Three variables are automatically populated during the processing, <b>TS_INPUT_FILEPATH, TS_INPUT_FILENAME &amp; TS_INPUT_BASENAME</b>
4	Mass property values are exported to the PDF data when using the <b>mprops</b> option.





## Known Limitations and Restrictions

The following limitations and restrictions have been identified during final testing prior to release

Ref ID	Limitations and Restrictions
--------	------------------------------

- |   |  |
|---|--|
| 1 | A current limitation of the .msi installation method is that the software cannot be installed directly on to external based mapped or network drives from a client machine. For guidance on how to do this, please find the documentation <a href="#">here</a> |
|---|--|

## Resolved Support Calls

The following list of Support Calls are resolved with this release.

Support Call ID	Brief Description
<b>CAS-03656-Q2D8Z5</b>	Issues using configuration files from earlier releases
<b>CAS-03661-L8M8S2</b>	PDF output shows additional volumes
<b>CAS-03662-F2P2B9</b>	Incorrect text position in title block.
<b>CAS-03769-B9T3D8</b>	Output option render_mode not honored and units set to IN cause view scaling issues
<b>CAS-03775-R7V9V4</b>	PDF view displays geometry not displayed in CATIA Capture "MBD_SECTION VIEW L-L"
<b>CAS-03777-R0Z9M1</b>	When importing text files that contain special characters no output is generated
<b>CAS-03798-C8B7F7</b>	Some of the PMI is not in the correct position in the PDF output

