



---

## PRODUCT RELEASE ANNOUNCEMENT

---

Product Category	<b>Publish 3D</b>
Product Group	CATIA V5 for 3D PDF
Release Version	21.1

Document Type	<b>Product Release Announcement</b>
Status	Released
Revision	2.0
Author	Product Manager
Issued	24/09/2018



## Contents

History .....	2
Product Codes .....	3
Supported Application Revisions.....	4
Supporting API's .....	4
Supported Operating Systems.....	4
Installation Process Considerations.....	5
Distribution Media.....	5
Related Distribution Media .....	5
New Features / Enhancements .....	7
Known Limitations and Restrictions.....	9
Resolved Support Calls .....	10



## History

Revision	Update Information
1.0	Initial Release
2.0	Updated release media to include the Configuration Manager executable. No changes have been made to the CATIA V5 to 3DPDF translator itself.

## Product Codes

<b>Product Code</b>	<b>Product Description</b>
<b>CA5PDF-U1</b>	CATIA V5 Publish 3D On Demand Interactive & Batch processing
<b>CA5PDF-I1</b>	CATIA V5 Publish 3D Interactive
<b>CA5PDF-A1</b>	Publish 3D Configuration Tool for CATIA users
<b>CA5PDF-S1</b>	Publish 3D consultancy services add-on module to support export of CATIA V5 Motion data to PDF

## Supported Application Revisions

The following application revisions have been qualified with this release

Application	Revision
<b>CATIA V5</b>	CATIA V5-6R2014, CATIA V5-6R2015, CATIA V5-6R2016, CATIA V5-6R2017, CATIA V5-6R2018
<b>Adobe Reader</b>	Adobe Reader XI

## Supporting API's

The following supporting API support is used

Application	Revision
<b>3D PDF API</b>	HOOPS Exchange Publish 2018

## Supported Operating Systems

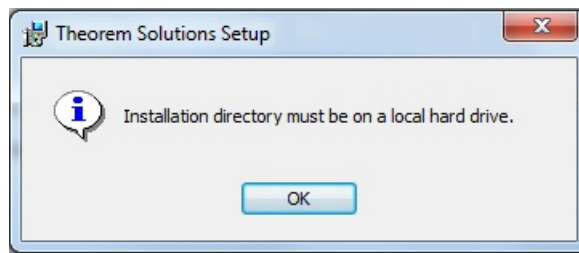
The following operating systems have been qualified with this release

Operating System	Qualification Status
<b>Windows 7 64bit</b>	Qualified and fully supported (All CATIA V5 Revisions)
<b>Window 8.1 64bit</b>	Qualified and fully supported for CATIA V5-6R2014 & CATIA V5-6R2015
<b>Windows 10 64bit</b>	Qualified and fully supported for CATIA V5-6R2016, CATIA V5-6R2017 & CATIA V5-6R2018
<b>Windows Server 2008 R2</b>	Qualified and fully supported for CATIA V5-6R2014, CATIA V5-6R2015, CATIA V5-6R2016, CATIA V5-6R2017 & CATIA V5-6R2018
<b>Windows Server 2012</b>	Qualified and fully supported for CATIA V5-6R2014, CATIA V5-6R2015, CATIA V5-6R2016, CATIA V5-6R2017 & CATIA V5-6R2018



## Installation Process Considerations

Starting with version 20.0 of Theorem Solutions applications changes have been made to the installation process. These changes have transitioned from a JAVA based installer package to a standard Microsoft Installer (.msi) package. A current limitation of the Microsoft msi method is that the software cannot be installed directly on to either externally mapped or network drives when installed from a client machine:



Therefore, the installation must be performed to a drive that is local to the machine itself.

If you are attempting to install the software onto a network drive, then please refer to the configuration guide available from the following link  
[http://www.theorem.com/documentation/Documentation/Client\\_Configuration.pdf](http://www.theorem.com/documentation/Documentation/Client_Configuration.pdf).

## Distribution Media

CD images of the latest release are available from the following download sites.

CATIA V5 Version	URL for CD image download
<b>ALL products for all versions of CATIA V5-6</b>	<a href="https://s3-eu-west-1.amazonaws.com/theorem.software/CADverter_21.1/CAD_21.1_CA5PDF_WIN.02.msi">https://s3-eu-west-1.amazonaws.com/theorem.software/CADverter_21.1/CAD_21.1_CA5PDF_WIN.02.msi</a>

## Related Distribution Media

In addition to the translator software itself there are also two other related media distributions available. One is for the installation and configuration of the Theorem User Interface. This is designed as a free-standing user interface for the translator allowing the user to navigate the file system and initiate translations either interactively or in batch using standard drag and drop techniques. The second media distribution contains the Theorem License Manager which is installed on the nominated license server(s) and manages the user access to the purchased volume of concurrent Theorem application licenses.



# PRODUCT RELEASE ANNOUNCEMENT

---



Related Package	URL for CD image download
<b>Theorem User Interface</b>	<a href="https://s3-eu-west-1.amazonaws.com/theorem.software/CADverter/21.1/CAD_21.1_UI_WIN.01.msi">https://s3-eu-west-1.amazonaws.com/theorem.software/CADverter 21.1/CAD 21.1 UI WIN.01.msi</a>
<b>Theorem License Manager</b>	<a href="https://s3-eu-west-1.amazonaws.com/theorem.software/LicenseManager/CAD_FLEXLM_11.14_WIN.01.msi">https://s3-eu-west-1.amazonaws.com/theorem.software/LicenseManager/CAD_FLEXLM_11.14 WIN.01.msi</a>



## New Features / Enhancements

The following new features or enhancements have been introduced with this release

Ref ID	New Feature / Enhancement Description
1	Support for CATIA V5-6R2018 has been implemented with this release
2	Use of latest HOOPS Exchange Publish 2018 libraries for PDF output
3	In general, this release is faster for small/medium size CATIA V5 datasets, but the resulting PDF can be larger. In some cases, the translation time is dramatically (x20) faster.
4	Fix for carousel widget output, the 2D images matches 3D images wireframe
5	The HTML5 output will now default with a footer similar to the STD pdf template
6	When processing assemblies there is a new option <b>process_parts</b> which creates individual PRC output components for each part
7	Option <b>part_snap_shot</b> added with the arguments of either <b>on</b> or Width x Height ( <b>WWxHH</b> ) values create a .jpg image for part/assembly
8	Changes to BOM table to support <b>column_data_source</b> with ' <b>part_image</b> ' and ' <b>image_file</b> '
9	Option <b>ts_bind_bom_table_image_&lt;column number&gt;</b> and <b>ts_bind_bom_table_text_&lt;column number&gt;</b> added as a bound fields to BOM table
10	Improved CSS support for active BOM tables - where <b>highlight_part=yes</b> setting is applied
11	Text fields in templates added checks for extended ascii and convert to utf8
12	Option <b>expand_parts</b> added to create a node per point using the TAG name
13	By default, the PDF output will be automatically optimized to make the PDF file smaller. To disable this feature there is an option <b>optimize_save off</b> provided.
14	Option <b>image_dir &lt;folder name&gt;</b> added to import images into a template
15	Ability to insert images into tables from external files supported
16	The document <b>Author/Title &amp; Subject</b> fields can now be set using a Configuration setting. This will overwrite any values that have been predefined in the associated template file





<b>17</b>	When saving a PDF file from within a CATIA V5 session the user can select to save the current viewed state as the initial orientation for the PDF output. This selection is made in the Tools>Options>Infrastructure>Theorem PDF menu page
<b>18</b>	When saving a PDF file from within a CATIA V5 session the top level node of the PDF file mimics the CATIA V5 part/assembly name that the PDF file is being created for.
	Extended character set support allowing UTF8 characters to be exported in all property fields of the PDF output.



## Known Limitations and Restrictions

The following limitations and restrictions have been identified during final testing prior to release

**Ref ID    Limitations and Restrictions**

<b>1</b>	A current limitation of the .msi installation method is that the software cannot be installed directly on to external based mapped or network drives from a client machine. For guidance on how to do this, please find the documentation <a href="#">here</a>
<b>2</b>	<p>The 'Theorem Help v21.1' shortcut provided in the Windows Start Menu is incorrect. It currently looks for help.html in %Installation_Directory%/guides when the file is in %Installation_Direcotry%.</p> <p>This can be rectified by:</p> <ul style="list-style-type: none"> <li>• Locate the Start Menu item (Theorem Help v21.1)</li> <li>• Right Click and then select Properties</li> <li>• In the 'Target' selection box, update the location to be "C:\Program Files\Theorem\21.1\help.html"</li> <li>• Select 'Apply'</li> </ul>



## Resolved Support Calls

The following list of Support Calls are resolved with this release.

<b>Support Call ID</b>	<b>Brief Description</b>
<b>CAS-03386-G4H0R2</b>	View orientation incorrect when processing V5 to PDF Capture
<b>CAS-03500-T4Z7T9</b>	PMI alignment issue

