



PRODUCT RELEASE ANNOUNCEMENT

Product Category	Visualize 3D
Product Group	CATIA V5 for JT
Product Release Version	22.1

Document Type	Product Release Announcement
Document Status	Released
Document Revision	1.0
Document Author	Product Manager
Document Issued	13/05/2019



Contents

History	2
Product Codes	3
Supported Application Revisions.....	4
Supported Operating Systems.....	4
Installation Process Considerations.....	5
Distribution Media.....	5
Related Distribution Media	5
New Features / Enhancements	7
CATIA V5 to JT (CA5JT).....	7
JT to CATIA V5 (JTCA5).....	7
Known Limitations and Restrictions	8
CATIA V5 to JT (CA5JT).....	8
JT to CATIA V5 (JTCA5).....	8
General	8
Resolved Support Calls	9



History

Revision	Update Information
1.0	Initial document release for Version 22.1

Product Codes

Product Code	Product Description
CA5JT-U1	CATIA V5 (CAA Based) to JT (uni-directional)
JTCA5-U1	JT to CATIA V5 (CAA Based) (uni-directional)
CA5JT-A5	CATIA V5 (CAA Based) to JT (uni-directional) with PMI Add On
CA5JT-A6	CATIA V5 (CAA Based) to JT (uni-directional) with Electrical Add On
CA5JT-A7	CATIA V5 (CAA Based) to JT (uni-directional) with 3D PDF Add On
JTCA5-A1	JT to CATIA V5 (CAA Based) (uni-directional) with 3DPDF Add On
JTCA5-A2	JT to CATIA V5 (CAA Based) (uni-directional) with 3DXML Export Module
CATJT-U1	CATIA V4 to JT (uni-directional)
CAGJT-U1	Combined CATIA V4 & CATIA V5 to JT (uni-directional)
CAGJT-U2	Combined CATIA V4 & CATIA V5 to JT (uni-directional) with PMI Add On



Supported Application Revisions

The following application revisions have been qualified with this release

Application	Revision
CATIA V4	All revisions
CATIA V5	CATIA V5-6R2015, CATIA V5-6R2016, CATIA V5-6R2017, CATIA V5-6R2018 & CATIA V5-6R2019
JTOpen	JTK 10.2.1.1

Supported Operating Systems

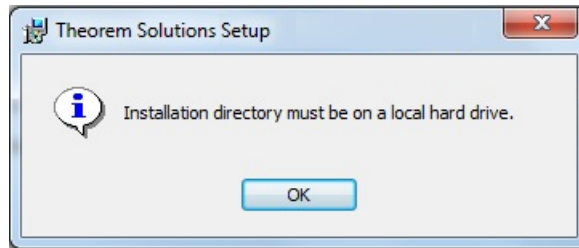
The following operating systems have been qualified with this release

Operating System	Qualification Status
Window 8 64bit	Qualified and fully supported for CATIA V4, CATIA V5-6R2015, CATIA V5-6R2016, CATIA V5-6R2017, CATIA V5-6R2018 & CATIA V5-6R2019
Windows Server 2008 R2	Qualified and fully supported for CATIA V4, CATIA V5-6R2015, CATIA V5-6R2016, CATIA V5-6R2017, CATIA V5-6R2018 & CATIA V5-6R2019
Windows Server 2012	Qualified and fully supported for CATIA V4, CATIA V5-6R2015, CATIA V5-6R2016, CATIA V5-6R2017, CATIA V5-6R2018 & CATIA V5-6R2019
Window 10 64bit	Qualified and fully supported for CATIA V4, V5-6R2016, CATIA V5-6R2017, CATIA V5-6R2018 & CATIA V5-6R2019



Installation Process Considerations

Starting with version 20.0 of Theorem Solutions applications changes have been made to the installation process. These changes have transitioned from a JAVA based installer package to a standard Microsoft Installer (.msi) package. A current limitation of the Microsoft msi method is that the software cannot be installed directly on to either externally mapped or network drives when installed from a client machine:



Therefore, the installation must be performed to a drive that is local to the machine itself.

If you are attempting to install the software onto a network drive, then please refer to the configuration guide available from the following link http://www.theorem.com/documentation/Documentation/Client_Configuration.pdf.

Distribution Media

CD images of the latest release are available from the following download site. The installation media for the bi-directional product is also the same media when installing a uni-directional variant.

Product Codes	Select link to download CD images
All Product Codes for all supported versions of CATIA V5	https://s3-eu-west-1.amazonaws.com/theorem.software/CADverter_22.1/CAD_22.1_CA5JT_WIN.01.msi

Related Distribution Media

In addition to the translator software itself there are also two other related media distributions available. One is for the installation and configuration of the Theorem User Interface. This is designed as a free-standing user interface for the translator allowing the user to navigate the file system and initiate translations either interactively or in batch using standard drag and drop techniques. The second media distribution contains the Theorem License Manager which is installed on the nominated license server(s) and manages the user access to the purchased volume of concurrent Theorem application licenses.



PRODUCT RELEASE ANNOUNCEMENT



Related Package	URL for CD image download
Theorem User Interface	https://s3-eu-west-1.amazonaws.com/theorem.software/CADverter_22.1/CAD_22.1_UI_WIN.01.msi
Theorem License Manager	https://s3-eu-west-1.amazonaws.com/theorem.software/LicenseManager/CAD_FLEXLM_11.14_WIN.01.msi



New Features / Enhancements

The following new features or enhancements have been introduced with this release

CATIA V5 to JT (CA5JT)

Ref ID	New Feature / Enhancement Description
1	Added support for CATIA V5-6R2019.
2	Integrated with JT Open Libraries version 10.2.1.1
3	Output CATIA V5 properties when no values are available. Previously properties with no values were ignored when processing. The default now is to process all properties including properties with no values. To revert the translator to ignore properties with no values use the option dont_read_empty_parameters

JT to CATIA V5 (JTCA5)

Ref ID	New Feature / Enhancement Description
1	Added support for CATIA V5-6R2019.
2	Integrated with JT Open Libraries version 10.2.1.1



Known Limitations and Restrictions

The following limitations and restrictions have been identified during final testing prior to release

CATIA V5 to JT (CA5JT)

Ref Limitations and Restrictions ID

--	--

JT to CATIA V5 (JTCA5)

Ref Limitations and Restrictions ID

--	--

General

Ref Limitations and Restrictions ID

1	<p>The utility jt_layers.cmd fails to process when the insatallation folder contains spaces. To over come this limitation either use a installation folder that doesn't contain spaces or edit the jt_layers.cmd file and edit line 69 and remove the quotes as below :</p> <pre style="background-color: #f0f0f0; padding: 5px;"> 68 69 %TRANS% %* 70 71 exit /B %ERRORLEVEL%</pre>
----------	--

Resolved Support Calls

The following list of Support Calls are resolved with this release

Support Call ID	Brief Description
CAS-03984	Translator crashes when processing selective data.
CAS-03935	Translator crashes when processing customer specific data.