



CADverter for CATIA V5i – Parasolid

Introduced at Product Release Version 20.3

Valid up to Product Release Version 21.2



Installation and Configuration Guide

Revision: 1.0
Issued: 03/09/2018

Contents

Read Me.....	2
Installation.....	2
Product Configuration	6



Read Me

This is a general Installation guide that was introduced at Version 20.3, so it may contain some illustrations from that revision and a similar product.

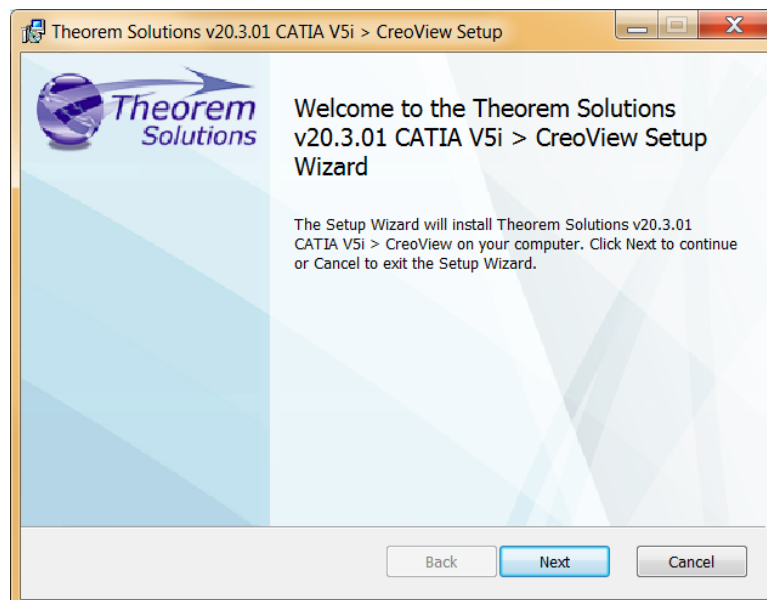
The Installation has not changed significantly up to the current release at 21.2.

It is therefore valid for all versions between those releases.

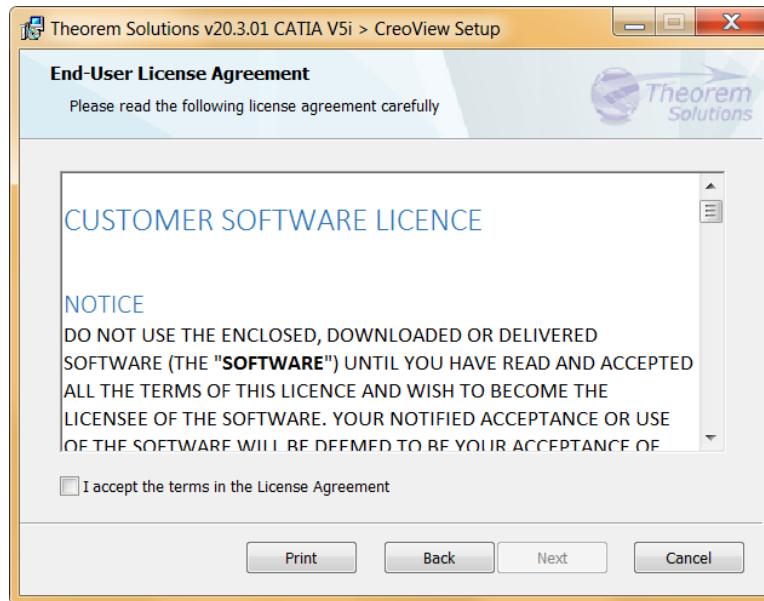
Installation

From R20 the installation process is run from the .msi which can be downloaded (See release notes for relevant link). Please double click this file to begin the process after download.

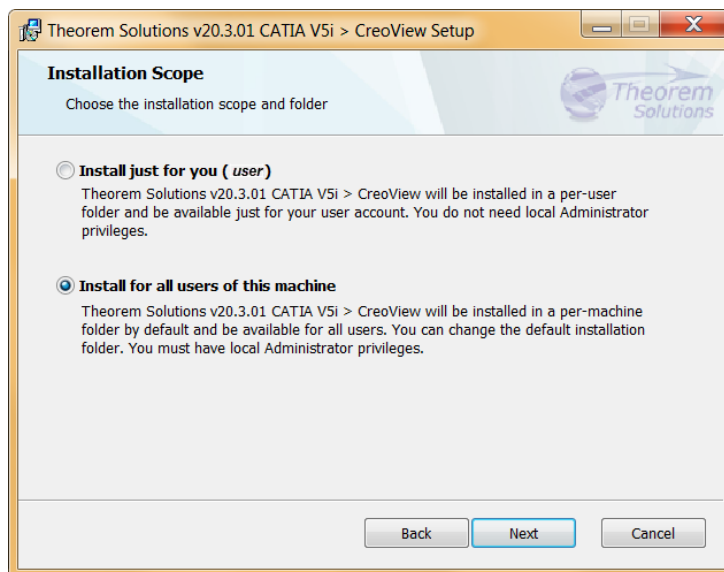
Once started, the Theorem installation will confirm the software to be installed. Please select 'Next'.



This will be followed by the License Agreement. Please read the agreement carefully, check the 'I accept...' box and then select 'Next'.



The next step is to declare who the software is to be installed for. There are two possibilities here, the default option is to install for all users or to install for just the user running the installation.

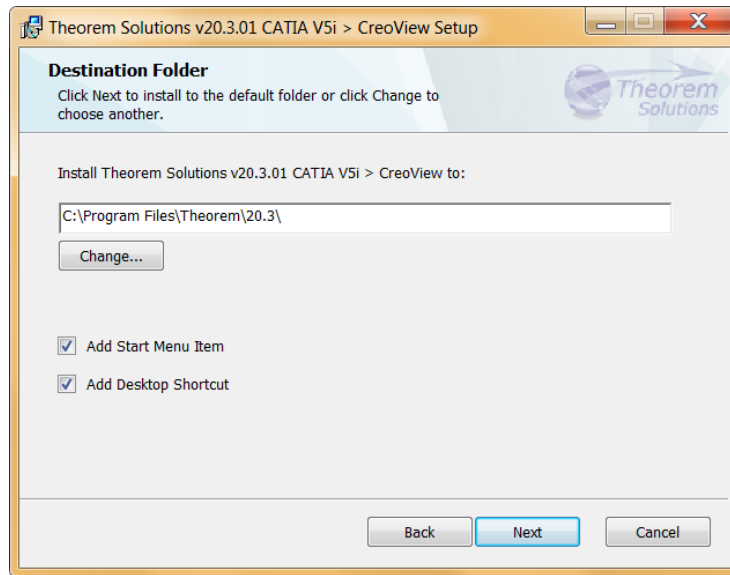


If the option 'Install just for you (user)' is selected then by default the software will set the install into your local user %TEMP% directory.

If the option 'Install for all users of this machine' is selected then by default the software will set the install into C:\Program Files\Theorem v2X.X\

Where X.X refers to the specific product version

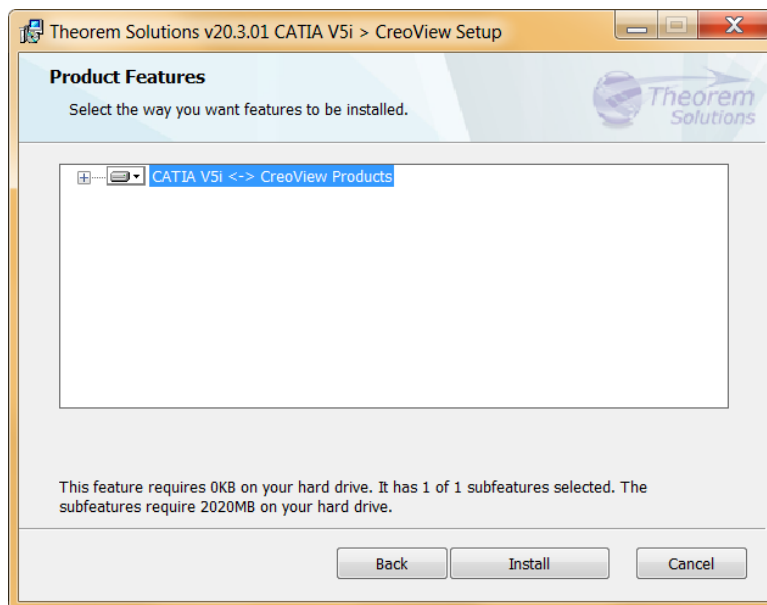




In either case the installation directory can be changed by pressing the ‘Change...’ button and selecting a new directory.

There are also options to create Start Menu items and Desktop items from both of these pages. These are set to be created by default however simply deselect the options based on your requirement.

Once the installation directory has been set then the translators to be installed must be selected.

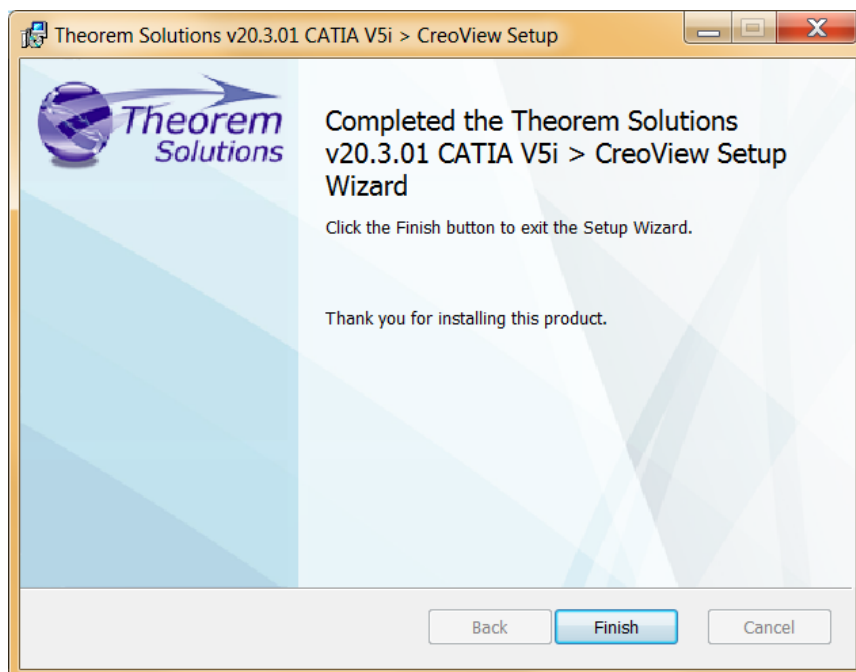
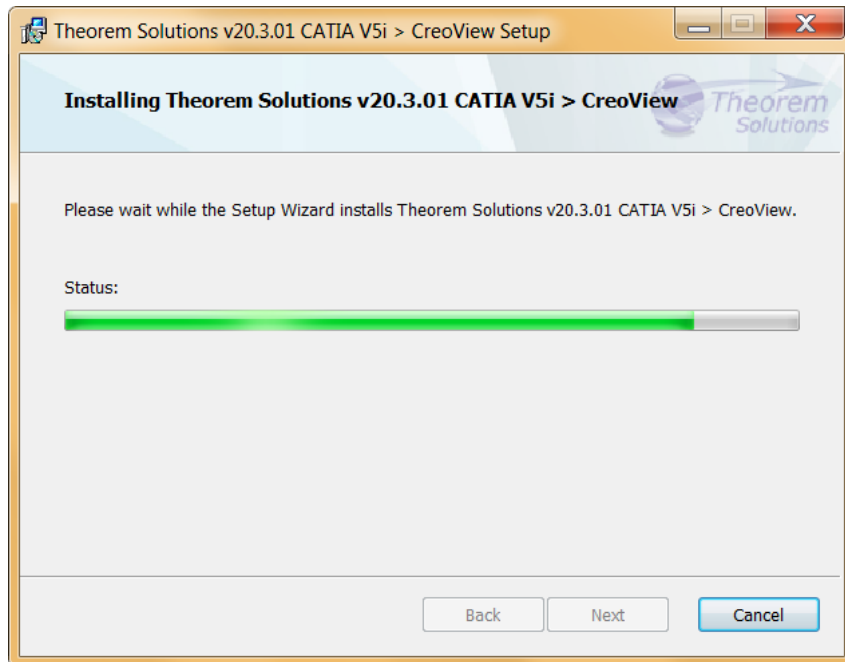


If there are some extended options available then a + symbol will be available next to the product group. To view the available options select this symbol and a list of options are presented.



There may be different product features available, (none at this version) some will be whole product features and others can be configured with extended options to the user's requirement based on any existing CAD installations that are detected.

Once complete, select 'Install' to begin the installation.



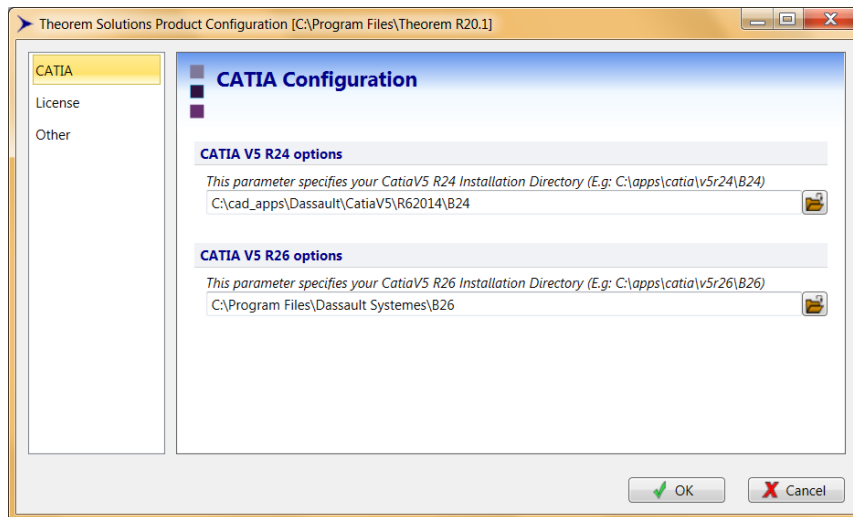
When the product installation has finished, this window is presented. Please press 'Finish'.



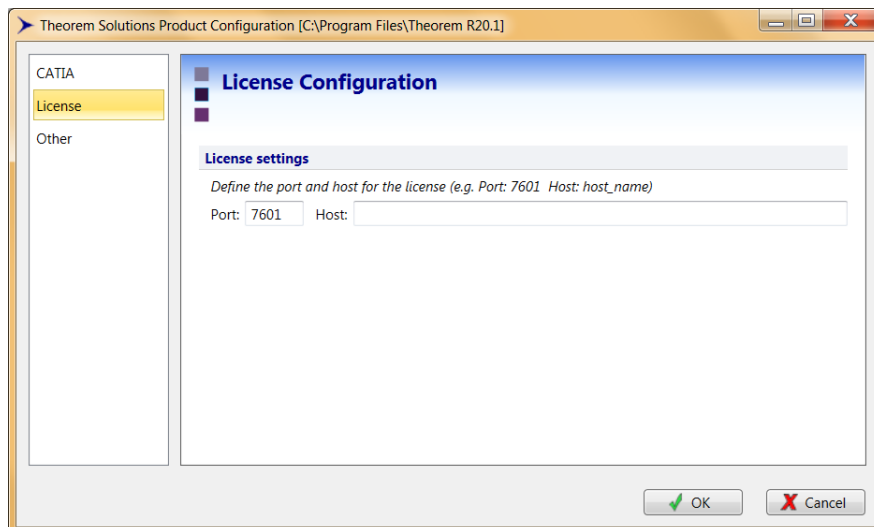
Product Configuration

After the product installation has completed the Theorem installation must be configured. After the ‘Finish’ button is selected the Product Configuration window is launched.

Product Configurations are not applicable to this product, but may be presented if there are other Theorem products installed on the same machine.



The ‘License’ panel allows you to set your license server information so that the translator can detect the correct license. The port will be pre-populated with the default port number of 7601. Please add in the Host ID of your license server.

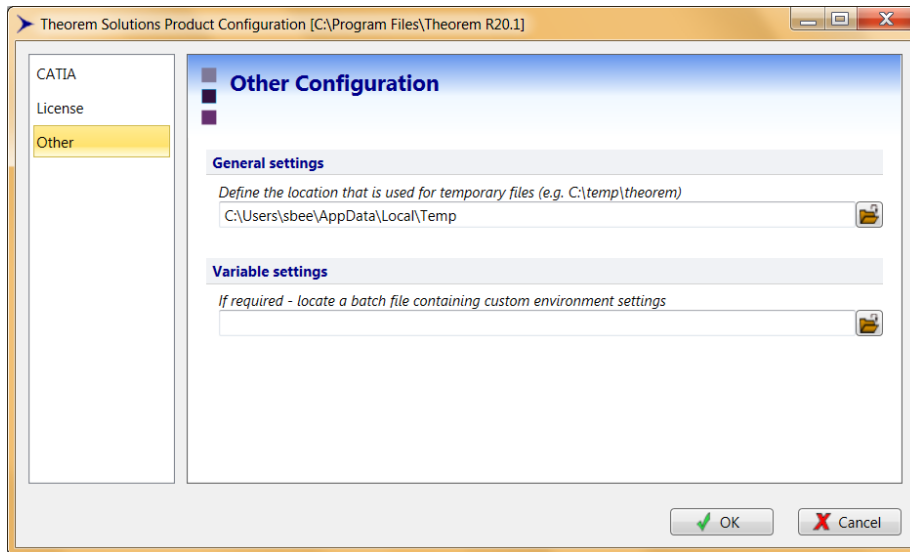


The ‘Other’ panel allows you to define a location used for temporary files and to include any variables that may be required.

To change the location used for temporary files, use the folder button to the right hand side and select a new directory.



The Variable settings are for advanced users only and should only be used under instruction from Theorem Support. If you need assistance with this please contact support@theorem.com



If, at any time, these settings need to be adjusted the Product Configuration window can be accessed from the Start menu

