



PRODUCT RELEASE ANNOUNCEMENT

Product Category	CADverter
Product Group	CATIA V5 (Independent) for NX
Release Version	22.2

Document Type	Product Release Announcement
Status	Released
Revision	1.0
Author	Product Manager
Issued	22/08/2019



Contents

History	2
Product Codes	3
Supported Application Revisions	3
Supporting API's	4
Supported Operating Systems	4
Installation Process Considerations	5
Distribution Media	6
New Features / Enhancements	7
Known Limitations and Restrictions.....	8
Resolved Support Calls.....	9



History

Revision	Update Information
1.0	Initial Release

Product Codes

Product Code	Product Description
C5INX-U1	Catia V5 Independent > NX Unidirectional Base Product
C5INX-A1	Catia V5 Independent > NX Unidirectional Add-on module for PMI
C5INX-A2	Catia V5 Independent > NX Unidirectional Add-on module for PDF
C5INX-B1	Catia V5 Independent > NX Bi-directional Base Product
NXC5I-U1	NX > Catia V5 Independent Unidirectional Base Product
NXC5I-A1	NX > Catia V5 Independent Unidirectional Add-on module for PDF
CATNX-U1	CATIA V4 > NX
CATNX-U3	CATIA V4 > NX (with 2D drawing support)
CATNX-B1	CATIA V4 <> NX
CATNX-B3	CATIA V4 <> NX (with 2D drawing support)

Supported Application Revisions

The following application revisions have been qualified with this release

Application	Revision
CATIA V4	All revisions
CATIA V5	All CATIA V5 file revisions from CATIA V5 R25 up to CATIA V56R2019. Note! This translator product does NOT require a CATIA V5 installation
NX	NX10, NX11, NX 12 & NX 1847



Supporting API's

The following supporting API support is used

Library	Revision
CATIA V5 CGM Interface	Spatial cigR2019_1.0.0

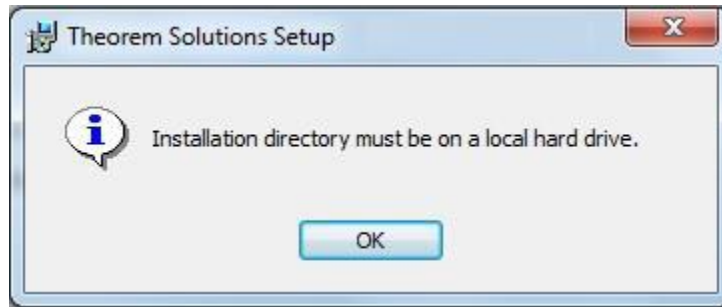
Supported Operating Systems

The following operating systems have been qualified with this release

Operating System	Qualification Status
Windows 7 64bit	Tested and but not fully supported as Siemens have stopped support for this OS at NX 12
Windows 8 64bit	Tested and but not fully supported as Siemens have stopped support for this OS at NX 12
Windows 10 64 Bit	Qualified and fully supported

Installation Process Considerations

Starting with version 20.0 of Theorem Solutions applications changes have been made to the installation process. These changes have transitioned from a JAVA based installer package to a standard Microsoft Installer (.msi) package. A current limitation of the Microsoft msi method is that the software cannot be installed directly on to either externally mapped or network drives when installed from a client machine:



Therefore, the installation must be performed to a drive that is local to the machine itself.

If you are attempting to install the software onto a network drive, then please refer to the configuration guide available from the following link

http://www.theorem.com/documentation/Documentation/Client_Configuration.pdf.

PRODUCT RELEASE ANNOUNCEMENT

Distribution Media

CD images of the latest release are available from the following download sites.

Product	URL for CD image download
Installation Media	https://s3-eu-west-1.amazonaws.com/theorem.software/CADverter_22.2/CAD_22.2_C5INX_WIN.01.msi

Related Distribution Media

In addition to the translator software there are also two other related media distributions available. One is for the installation and configuration of the Theorem User Interface. This is designed as a free-standing user interface for the translator allowing the user to navigate the file system and initiate translations either interactively or in batch using standard drag and drop techniques. The second media distribution contains the Theorem License Manager which is installed on the nominated license server(s) and manages the user access to the purchased volume of concurrent Theorem application licenses

Related Package	URL for CD image download
Unified Interface	https://s3-eu-west-1.amazonaws.com/theorem.software/CADverter_22.2/CAD_22.2_UI_WIN.01.msi
License Server	https://s3-eu-west-1.amazonaws.com/theorem.software/LicenseManager/CAD_FLEXLM_11.14_WIN.01.msi



New Features / Enhancements

The following new features or enhancements have been introduced with this release

Ref ID	New Feature / Enhancement Description
1	Support for NX 1847

Known Limitations and Restrictions

The following limitations and restrictions have been identified during final testing prior to release

Ref ID	Limitations and Restrictions
--------	------------------------------

1	<i>When running translations either V5i to NX or NX to V5i using the MPROPS option to generate validation properties from within the CADverter UI the XML progress file output is not displayed correctly. To work around this problem disable the XML progress file output using the UI configure.exe application.</i>
2	<i>PMI is not supported for NX to V5i and the option has been removed from the UI</i>
3	<i>When choosing to output R29 – R28 is actually written. This is due to a limitation in the API</i>

PRODUCT RELEASE ANNOUNCEMENT

Resolved Support Calls

The following list of Support Calls are resolved with this release

Support Call ID	Brief Description
------------------------	--------------------------
