



---

## PRODUCT RELEASE ANNOUNCEMENT

---

Product Category	CADverter
Product Group	CATIA V5 (Independent) for NX
Release Version	21.2

Document Type	Product Release Announcement
Status	Released
Revision	1.0
Author	Product Manager
Issued	07/08/2018



## Contents

History .....	1
Product Codes .....	2
Supported Application Revisions .....	2
Supporting API's .....	3
Supported Operating Systems .....	3
Distribution Media .....	4
New Features / Enhancements .....	4
Known Limitations and Restrictions.....	7
Resolved Support Calls.....	8

## History

Revision	Update Information
1.0	Initial Release



## Product Codes

Product Code	Product Description
<b>C5INX-U1</b>	Catia V5 Independent > NX Unidirectional Base Product
<b>C5INX-A1</b>	Catia V5 Independent > NX Unidirectional Add-on module for PMI
<b>C5INX-A2</b>	Catia V5 Independent > NX Unidirectional Add-on module for PDF
<b>C5INX-B1</b>	Catia V5 Independent > NX Bi-directional Base Product
<b>NXC5I-U1</b>	NX > Catia V5 Independent Unidirectional Base Product
<b>NXC5I-A1</b>	NX > Catia V5 Independent Unidirectional Add-on module for PDF
<b>CATNX-U1</b>	CATIA V4 > NX
<b>CATNX-U3</b>	CATIA V4 > NX (with 2D drawing support)
<b>CATNX-B1</b>	CATIA V4 <> NX
<b>CATNX-B3</b>	CATIA V4 <> NX (with 2D drawing support)

## Supported Application Revisions

The following application revisions have been qualified with this release

Application	Revision
<b>CATIA V4</b>	All revisions
<b>CATIA V5</b>	All CATIA V5 file revisions from CATIA V5 R15 up to CATIA V56R2017. Note! This translator product does NOT require a CATIA V5 installation
<b>NX</b>	NX10 NX11 NX 12



## Supporting API's

The following supporting API support is used

Library	Revision
<b>CATIA V5 CGM Interface</b>	Spatial cigR2018_1.0.0

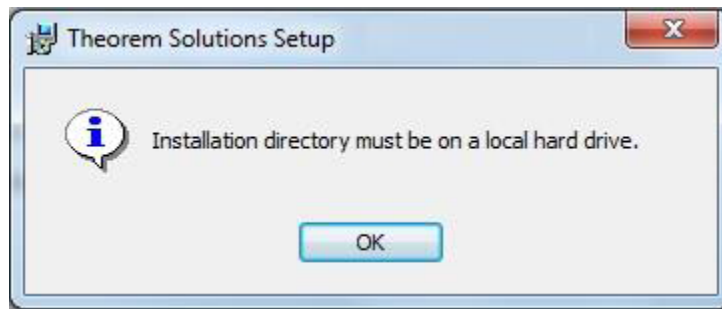
## Supported Operating Systems

The following operating systems have been qualified with this release

Operating System	Qualification Status
<b>Windows 7 64bit</b>	Tested and but not fully supported as Siemens have stopped support for this OS at NX 12
<b>Windows 8 64bit</b>	Tested and but not fully supported as Siemens have stopped support for this OS at NX 12
<b>Windows 10 64 Bit</b>	Qualified and fully supported

## Installation Process Considerations

Starting with version 20.0 of Theorem Solutions applications changes have been made to the installation process. These changes have transitioned from a JAVA based installer package to a standard Microsoft Installer (.msi) package. A current limitation of the Microsoft msi method is that the software cannot be installed directly on to either externally mapped or network drives when installed from a client machine:



Therefore, the installation must be performed to a drive that is local to the machine itself.

If you are attempting to install the software onto a network drive, then please refer to the configuration guide available from the following link

[http://www.theorem.com/documentation/Documentation/Client\\_Configuration.pdf](http://www.theorem.com/documentation/Documentation/Client_Configuration.pdf).

## Distribution Media

CD images of the latest release are available from the following download sites.

Product	URL for CD image download
Installation Media	<a href="#">CAD 21.2 C5INX12 WIN.01</a>

## Related Distribution Media

In addition to the translator software there are also two other related media distributions available. One is for the installation and configuration of the Theorem User Interface. This is designed as a free-standing user interface for the translator allowing the user to navigate the file system and initiate translations either interactively or in batch using standard drag and drop techniques. The second media distribution contains the Theorem License Manager



## PRODUCT RELEASE ANNOUNCEMENT

---

which is installed on the nominated license server(s) and manages the user access to the purchased volume of concurrent Theorem application licenses

Related Package	URL for CD image download
<b>Unified Interface</b>	<a href="https://s3-eu-west-1.amazonaws.com/theorem.software/CADverter_21.2/CAD_21.2_UI_WIN.01.msi">https://s3-eu-west-1.amazonaws.com/theorem.software/CADverter_21.2/CAD_21.2_UI_WIN.01.msi</a>
<b>License Server</b>	<a href="https://s3-eu-west-1.amazonaws.com/theorem.software/LicenseManager/CAD_FLEXLM_11.14_WIN.01.msi">https://s3-eu-west-1.amazonaws.com/theorem.software/LicenseManager/CAD_FLEXLM_11.14_WIN.01.msi</a>



## New Features / Enhancements

The following new features or enhancements have been introduced with this release

Ref ID	New Feature / Enhancement Description
1	



## Known Limitations and Restrictions

The following limitations and restrictions have been identified during final testing prior to release

<b>Ref ID</b>	<b>Limitations and Restrictions</b>
---------------	-------------------------------------

<b>1</b>	<i>When running translations either V5i to NX or NX to V5i using the MPROPS option to generate validation properties from within the CADverter UI the XML progress file output is not displayed correctly. To work around this problem disable the XML progress file output using the UI configure.exe application.</i>
<b>2</b>	<i>pmi is not supported for NX to V5i and the option has been removed from the UI</i>



## Resolved Support Calls

The following list of Support Calls are resolved with this release

<b>Support Call ID</b>	<b>Brief Description</b>
CAS-03457-R7R3Z9	V5I TO NX10: When attempting to translate 69Z89LAJ7WDF0529_002.CATProduct, customer is getting error message that states VENPDELIB7.dll is missing from your computer

